

**HIGH PRESSURE
AIR LIFTING BAGS**

**SIMPLY
THE
BEST**





High Pressure



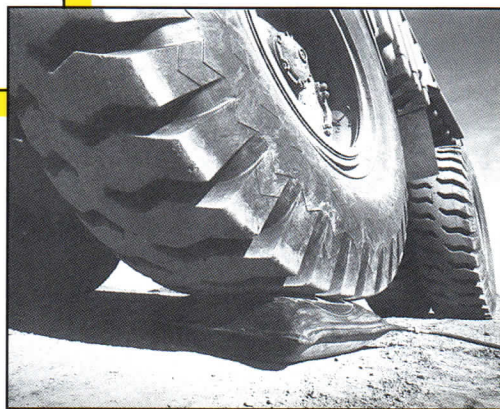
MatJack airbags have been helping a variety of industries worldwide in countless applications.

MatJack Airbags — Reliable, Safe and Easy-to-Use!

Put MatJacks under a load and inflate! Our hand-held controls have two positions: inflate and deflate. It's just that easy. No more hand jacking or complex hydraulic valve systems.

MatJacks will work anywhere you have one inch clearance and perform in the most adverse conditions. Use MatJacks in a field, thrown on sharp gravel, muddy banks, wet grass, or other sloppy conditions. Use on the ground for conventional jacking, or turn sideways to scoot heavy machinery or objects from a tight corner. MatJacks work where conventional jacks won't.

Covered with five layers of butyl rubber with a raised, conical, interlocking surface, MatJacks are made to grip the load. With up to 1,156 square inches of surface area (7,458.5 sq. cm.), MatJacks provide the best traction possible. Each MatJack comes with 20' (6.2 m.) of high pressure hose and hand controls so you're out from under the load pushing buttons, not underneath the load you are trying to lift.



MatJacks for the Construction Industry

MatJacks work perfectly in construction sites. Even in the muddiest, sloppiest, iciest conditions, MatJacks make lifting easy. Move machinery or pipe, pick up bridge sections, or raise and level buildings and heavy objects quickly and easily. Perform undercarriage work or change tracking and tires quickly on the largest off-road equipment. Lifting heavy machinery for repairs is made simple with MatJack.

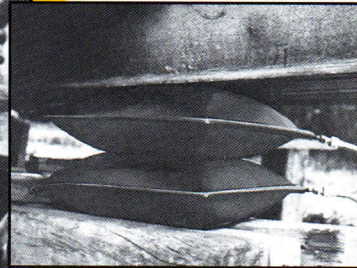
The MatJack Advantage

When you use MatJack airbags, you get the advantage of one of the simplest and most versatile tools available today for lifting and moving heavy objects.

Widely used throughout a variety of industries, MatJacks lift heavy machinery at construction sites, set and adjust manufactured buildings and assist housemovers. MatJacks are used to upright overturned rigs and are an integral part of the equipment of an ever-growing number of fire and rescue departments. MatJacks are totally manufactured in the USA and have been popular worldwide for more than a decade.

When you need a tough, versatile airjack, get the MatJack Advantage! Call our toll free number, (800-827-3755) for the name and phone number of the nearest MatJack dealer in your area.

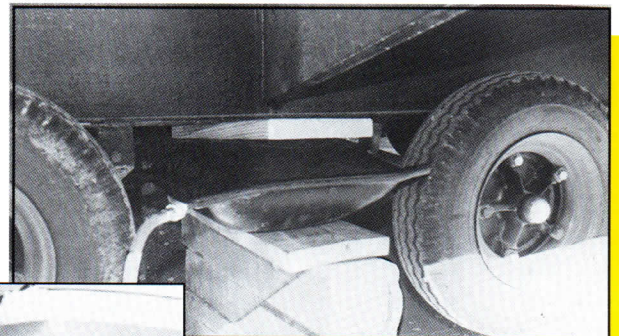
Air Bags



MatJacks for the Manufactured Home & House Moving Industry

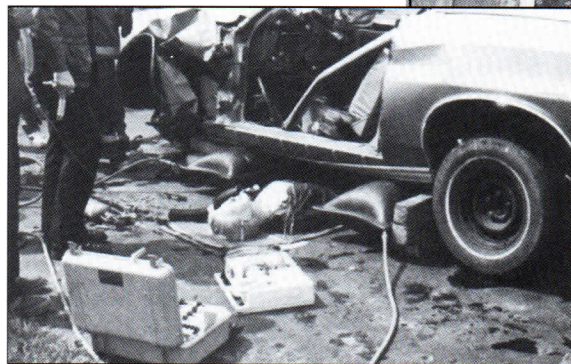
MatJacks are uniquely designed to lift, roll and level singles, doublewides, modulars and other forms of manufactured housing. Using its remote controls, you get safely out from underneath the home without the bumps and bruises that often come when operating a bottle jack. If your driver can put the sections within six inches of each other, a couple of MatJacks and a comealong become a setting system for doublewides. Whether lifting a house from the side of a hill or a portable school off asphalt, MatJacks are a unique airjack designed to lift, shift and level with a minimum of fuss and only one inch of clearance.

MatJack High Pressure Airbags Rise above the Competition Every Time!



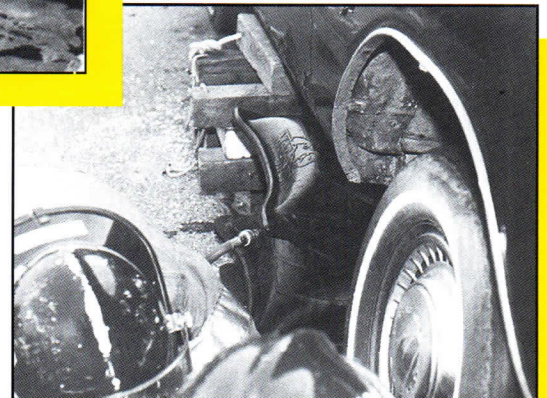
MatJacks for the Fire & Rescue Industry

When seconds count and lives are on the line, MatJacks can help free victims trapped in wrecked or collapsed vehicles. Needing only an inch of clearance, MatJacks can slide into areas no ordinary jacking system can go, helping to extricate victims quickly and easily. If a human can get there, so can a MatJack.



MatJacks are American-made and built with the high quality and rugged construction you expect when you get the best!

MatJacks Have a Five-Year Warranty The Best in the Industry!



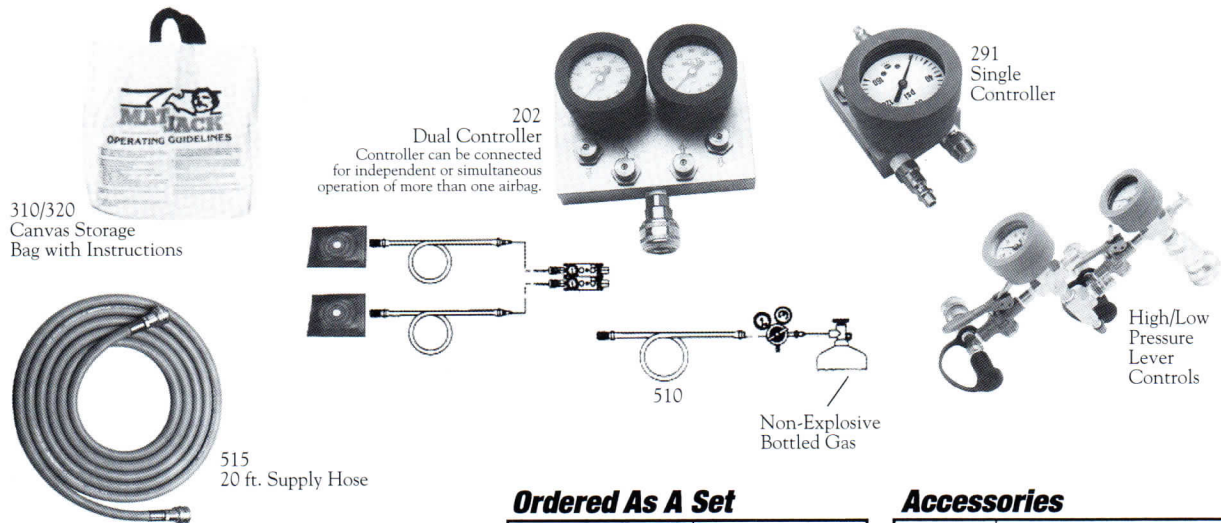


Airbag Specifications & Accessories

Airbag Specifications

| MAX. LIFTING CAP. (TONS) | LIFTING Ht. (in.) | PART NO. (Steel) | PART NO. (Kevlar) | MAX. WORKING PRESSURE (p.s.i.) | DIMENSIONS | | | | |
|-----------------------------------|----------------------|---------------------|----------------------|---|-----------------|----------------|------------------------|-------------------|--------------------|
| | | | | | LENGTH (in.) | WIDTH (in.) | COLLAPSED Ht. (in.) | WEIGHT (Steel) | WEIGHT (Kevlar) |
| 1.5 | 2.0 | 101 | 101k | 120 | 6 | 6 | .75 | N/A | 2 |
| 3.3 | 3.0 | 103 | 103k | 120 | 12 | 6 | .75 | N/A | 3 |
| 6 | 4.5 | 106 | 106k | 120 | 10 | 10 | 1 | 6 | 4 |
| 13 | 7.5 | 113 | 113k | 120 | 15 | 15 | 1 | 12 | 8 |
| 22 | 9.5 | 122 | 122k | 120 | 20 | 20 | 1 | 28 | 20 |
| 32 | 12 | 132 | 132k | 120 | 21 | 25 | 1 | 32 | 25 |
| 50 | 15 | 150 | 150k | 120 | 29 | 29 | 1 | 63 | 41 |
| 70 | 18 | 170 | 170k | 120 | 34 | 34 | 1 | 92 | 55 |

NOTE: All Airbags are offered standard in butyl rubber. Carrying handle optional on some models.



Ordered As A Set

| | |
|------------------|--------------------|
| P/N 101B (Steel) | 1.5 ton Basic Unit |
| P/N 103B (Steel) | 3.3 Ton Basic Unit |
| P/N 106B (Steel) | 6 Ton Basic Unit |
| P/N 113B (Steel) | 13 Ton Basic Unit |
| P/N 122B (Steel) | 22 Ton Basic Unit |
| P/N 132B (Steel) | 32 Ton Basic Unit |
| P/N 150B (Steel) | 50 Ton Basic Unit |
| P/N 170B (Steel) | 70 Ton Basic Unit |

| | |
|--------------------|--------------------|
| P/N 101BK (Kevlar) | 1.5 ton Basic Unit |
| P/N 103BK (Kevlar) | 3.3 Ton Basic Unit |
| P/N 106BK (Kevlar) | 6 Ton Basic Unit |
| P/N 113BK (Kevlar) | 13 Ton Basic Unit |
| P/N 122BK (Kevlar) | 22 Ton Basic Unit |
| P/N 132BK (Kevlar) | 32 Ton Basic Unit |
| P/N 150BK (Kevlar) | 50 Ton Basic Unit |
| P/N 170BK (Kevlar) | 70 Ton Basic Unit |

Each basic unit includes one MatJack Air Lifting Bag, one single unit deadman controller, one 20 ft. high pressure supply line, and one canvas storage bag with instructions.

Accessories

| | |
|-----------|----------------------------------|
| No. 201 | Single Unit Controller |
| No. 202 | Two Unit Controller |
| No. 204 | Four Unit Controller |
| No. 306 | 1.5/3.3/6 Ton Canvas Storage Bag |
| No. 310 | 13 Ton Canvas Storage Bag |
| No. 320 | 22/32 Ton Canvas Storage Bag |
| No. 330 | 50 Ton Canvas Storage Bag |
| No. 340 | 70 Ton Canvas Storage Bag |
| No. 505 | Y-Hose |
| No. 510 | 10 ft. Regulator Hose |
| No. 515 | 20 ft. High Pressure Supply Hose |
| No. 525 | 25 ft. High Pressure Supply Hose |
| No. 612 | In-Line Relief Valve |
| No. 625 | 30 ft. Ratchet Strap |
| No. 722 | Regulator (2216) |
| No. 745 | Regulator (4500) |
| No. 653 | Shut-Off Valve |
| No. 604cc | Hard Shell Carrying Case |
| No. 600vk | Universal Connector Kit |



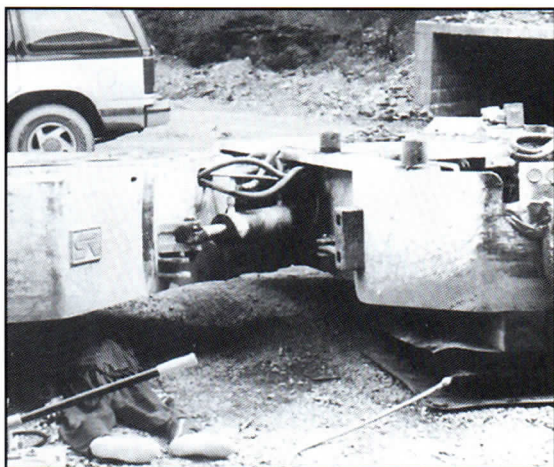
★ ★ MADE IN AMERICA ★ ★



FULL SERVICE FIRE EQUIPMENT SUPPLIER

1-502-633-0149

website:www.hightechrescue.com

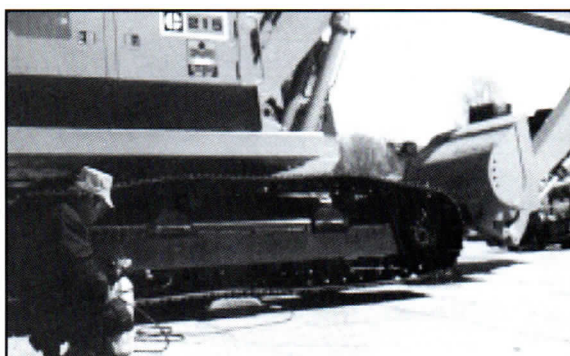


Use MatJacks under the most adverse conditions to relocate, position and align heavy machinery and odd-shaped loads.

MatJack airbags are used anywhere there's a heavy object or large piece of machinery to lift or move.

MatJacks for the Mining, Military & Railroad Industries

Use MatJacks to quickly and safely rerail mining locomotives, rail cars, or ladle cars. MatJacks are useful in quarrying limestone and marble; and can be used in rescue operations in mines and quarries to move and lift rubble from trapped victims. MatJacks are used in cargo container loading and shipping as well as other Navy transport activities. Even in the worst field conditions, MatJacks are indispensable for vehicle field service of tracked and lugged off-road equipment such as tanks, personnel carriers, airport vehicles, and self-propelled artillery.



MatJack Airbags: Simply the Best!

MatJack's unique construction of five full layers of Kevlar aramid fiber or three full layers of woven steel, provide for a lifting bag unequalled in strength and durability. All MatJack airbags are marked with a distinct white or yellow "bulls eye" for ease of centering under the load, and have a conical, interlocking surface to limit slippage and aid in stacking.

The MatJack "state-of-the-art" deadman controller allows for independent or simultaneous operation of one or more airbags.

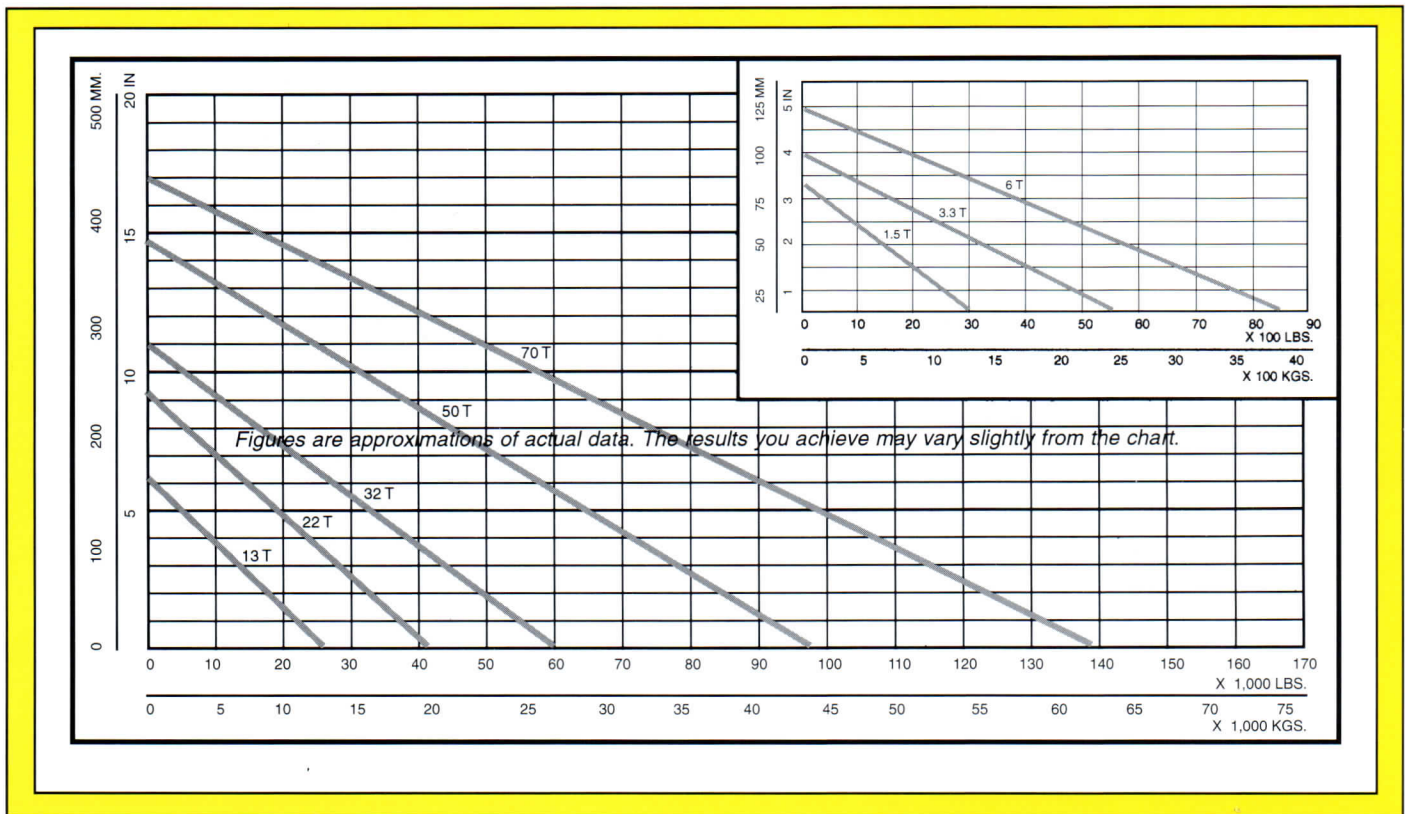
Supply hoses are available in six different colors to help eliminate confusion during simultaneous operation of more than one air bag. Available in a variety of sizes and ranging in lifting capacity from 1.5 tons to 70 tons, the MatJack airbag system is efficient and economical, safe and reliable, — **making them simply the best.**



MatJack airbags are American-made and built with the high quality and rugged construction you expect when you get the best!

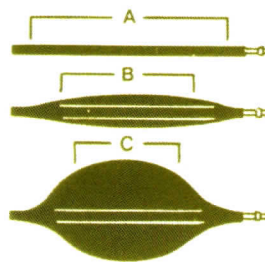
For more information, call: (800) 827-3755!

The MatJack Advantage

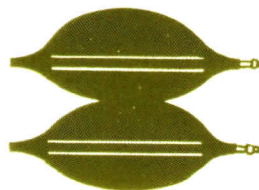


MatJack Height vs. Load Capacity at 120 p.s.i.

MatJack Maximum Effective Lifting Area



All lifting capacities mentioned in the charts are measured at the maximum effective lifting area (A). As the jack is inflated (B), this effective area decreases (C) due to the rounded shape of the jack. Lifting capacity also decreases (see performance chart).



Stack up two jacks together to increase effective lifting height.

Especially effective when used to:

- Lift or shift pipelines for welding or maintenance
- Changing tires on heavy equipment
- Moving slabs at quarries
- Remove wheels, pulleys and gears from large machinery
- Lifting buildings or other structures
- Rerailing railroad and mining cars
- Positioning and aligning heavy equipment and machinery in shops, mills, etc.
- Lift cylindrical and odd shaped loads
- In farm and industrial accidents where victims are trapped or pinned in or under machines
- In rail, underground, subway and mining maintenance work