



*The New Force
in Firefighting*



G-Force

Domestic Catalog

by: TASK FORCE TIPS 

G-Force Nozzles: The Inside Story

Based on a highly customizable global nozzle platform design, the unique G-Force series of fixed, selectable, and automatic nozzles combine over 40 years of Task Force Tips design innovation and experience into true next generation firefighting tools. Manufactured exclusively at TFT's USA production facilities, the G-Force series is supported by an extensive infrastructure of 24-hour technical service representatives, on-line documentation, digital video training library, exclusive product serialization and tracking capabilities, and a proven 5 year product warranty. Incorporating unique performance components such as a stainless steel slide valve, inlet debris screen and protective fog pattern choices, the G-Force series delivers high performance and rugged dependability in a low cost package.

Serialization provides track-ability and immediate access to on-line operational instructions

Integral Inlet Screen prevents debris from entering nozzle and affecting stream quality

Stainless Steel Slide Valve provides turbulence-free flow control when gated

Color-Coded Polymer Pistol Grip, and Valve Handle Covers offer rugged durability in harsh firefighting conditions

G-Force Model #GF3CIS

Flush without nozzle shutdown or pattern adjustment

Made In The USA 

Table of Contents

3



G-Force

6



7



9

PRO/pak



*The New Force
in Firefighting*



For a complete list of
FM Approved models
visit newforce.tft.com

NFPA #1964
compliant

Integral Tactile Indicator
provides optional preset
pattern selection or lock out

Choice of:

- Fixed Cut Metal
- Fixed Molded Rubber
- Spinning Stainless Steel (shown)

Choice of:

- Fixed Pressure and Flow
- Selectable Flow with Fixed Pressure, or
- 2 Automatic Pressure and Variable Flow Choices

Choice of:

- Tip Only
- Shutoff
- Shutoff with Grip Models

Bonded Rubber Bumper
provides maximum durability
in harsh conditions

Lightweight Hard Anodized
Aluminum Alloy Body includes
permanent laser engraved
operational markings and
highly visible reflective labeling

Large Index Ring with
Indicator allows easy flow,
or flush selections with
a gloved hand



G-Force



G-Force High Performance Features



GF2CIF

Tip Only, Shutoff and Shutoff with Grip Models

With 72 available models, the G-Force series offers two piece tip only and ball valve configurations for break-and-extend operations, as well as one piece nozzles with an integrated slide valve. All models, including two piece ball valve configurations, can be ordered with a color coded pistol grip and valve handle cover.



Fixed Cut Metal, Molded Rubber, or Stainless Steel Spinning Teeth



All models may be ordered with your choice of diamond cut fixed metal, fixed molded rubber, or stainless steel spinning teeth. All fog teeth are designed to provide superior pattern performance and outstanding firefighter protection without bent, broken, or missing teeth. The bonded rubber bumper provides long term rugged dependability even in the harshest firefighting conditions.

Rugged Color Coded Valve Handle and Pistol Grip

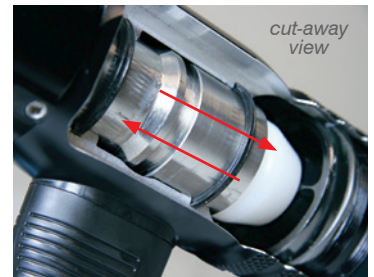
Ergonomically shaped pistol grip, valve handle and covers made from supertough polymer for rugged dependability.

Eleven available colors allow for customization for pump discharge hoseline identification, for specific fire apparatus, specific stations or department.



Stainless Steel Slide Valve

Unique slide style valve and positive valve position detents in all one piece nozzles provides turbulence-free stream performance even when gating the nozzle.



Integral Debris Screen

Inlet screen prevents pattern destroying debris from entering the nozzle and becoming lodged. Items that pass through the screen are easily flushed out the front of the nozzle.

Flush without Pattern Adjustment or Nozzle Shut Off

Nozzles can be easily and effectively flushed of unwanted and pattern destroying debris that enters the nozzle without shutting down or changing pattern selection during hazardous firefighting conditions.



Index Ring

Large, easy to grip index ring provides both visual and tactile indication of operational flow or flush choices.



Reflective Labeling and Permanent Laser Markings

Reflective clear coated labeling provides a visually reflective image at night or in dark conditions. High contrast laser engraved operational controls are permanently marked for a lifetime of rugged service.

Reflective clear coated labeling provides a visually reflective image at night or in dark conditions. High contrast laser engraved operational controls are permanently marked for a lifetime of rugged service.



Tactile Pattern Position Indicator

Tactile indicator preset to straight stream position offers optional pattern selection detent or pattern lock out. The quick change pattern adjustment allows straight stream to a wide protective fog pattern with one simple hand motion.

Model Serialization

Each nozzle is permanently marked with a unique serial number that aids in departmental asset tracking, manufacture date, model identification, and easily tracks service and warranty activities. Web enabled on-line serial number search also provides immediate access to all operational and service documentation.



G-Force Model Ordering Matrix

1. Determine Thread Inlet
2. Choose Tip Only, Shutoff, or Shutoff with Grip Configuration
3. Choose Fixed, Selectable, or Automatic pressure control in either 100 or 75psi operational pressure
4. Choose Fixed Rubber Molded, Spinning Stainless Steel, or Fixed Cut Metal Fog Tooth Design
5. Part Number from Matrix can be used for ordering from any authorized New Force Dealer

Series	Inlet		Style		Pressure Control		Shaper Control		Fog Teeth	
G	F	1.5" NH Female	2	One Piece Nozzle with Slide Valve (No Pistol Grip)	A	Fixed 150gpm @ 100psi	1	Fixed Tactile Indicator	F	Fixed Molded Rubber
	T	1.5" NPSH Female	3	One Piece Nozzle with Slide Valve and Pistol Grip	B	Fixed 150gpm @ 75psi			S	Spinning Stainless Steel
			5	Two Piece Nozzle with Tip-Only and Ball Valve Shutoff (No Pistol Grip)	C	Selectable 30/60/95/125/150gpm @ 100psi			M	Fixed Cut Metal
			6	Two Piece Nozzle with Tip-Only and Ball Valve Shutoff with Pistol Grip	D	Selectable 30/60/95/125/150gpm @ 75psi				
					E	Automatic 60-150gpm @ 100psi				
					F	Automatic 60-150gpm @ 75psi				

Order example below for part number: **GF3E1F**

Series	Inlet		Style		Pressure Control		Shaper Control		Fog Teeth	
G	F	1.5" NH Female	3	One Piece Nozzle with Slide Valve and Pistol Grip	E	Automatic 60-150gpm @ 100psi	1	Tactile Indicator	F	Fixed Rubber



G-Force Flow and Pressure Choices



Fixed Pressure and Flow

Optimal straight stream and fog pattern performance are achieved at a single rated flow and single rated pressure.

A	Fixed 150gpm @ 100psi
B	Fixed 150gpm @ 75psi



Selectable Flow with Fixed Pressure

Optimal straight stream and fog pattern performance are achieved at the selected flow and the single rated pressure.

C	Selectable 30/60/95/125/150gpm @ 100psi
D	Selectable 30/60/95/125/150gpm @ 75psi



Automatic Pressure / Variable Flow

Optimal straight stream and fog pattern performance are achieved over the rated flow range at the rated pressure.

E	Automatic 60-150gpm @ 100psi
F	Automatic 60-150gpm @ 75psi



Style of Valve

One piece nozzle design with integrated slide valve provides turbulence-free flow control and five detent flow positions.

2	One Piece Nozzle with Slide Valve (No Pistol Grip)
---	--



Two piece nozzle design with combination nozzle tip combined with full flow ball shutoff valve with six detent flow positions.

5	Two Piece Nozzle with Tip-Only and Ball Valve Shutoff (No Pistol Grip)
---	--



One piece nozzle design with pistol grip and integrated slide valve provides turbulence-free flow control and five detent flow positions.

3	One Piece Nozzle with Slide Valve and Pistol Grip
---	---



Two piece nozzle design with combination nozzle tip combined with full flow ball shutoff valve with pistol grip and six detent flow positions.

6	Two Piece Nozzle with Tip-Only and Ball Valve Shutoff with Pistol Grip
---	--





The Vibrating Flow Indicator

The vFlow makes a distinct vibration that is felt by the hose crew when their charged line achieves a predetermined minimum target fire flow. The field adjustable set point is easily changed to meet your operational standards and is factory set at 150gpm. (see figure below). The vFlow can be used with all types of handheld nozzles; automatic, selectable flow, fixed orifice, or smooth bore. It can be installed directly behind the nozzle, or behind a two foot length of hose when used with smooth bore and low pressure nozzles.

VF1200E



Inside the vFlow, self-cleaning turbine vanes work to shed hoseline debris.

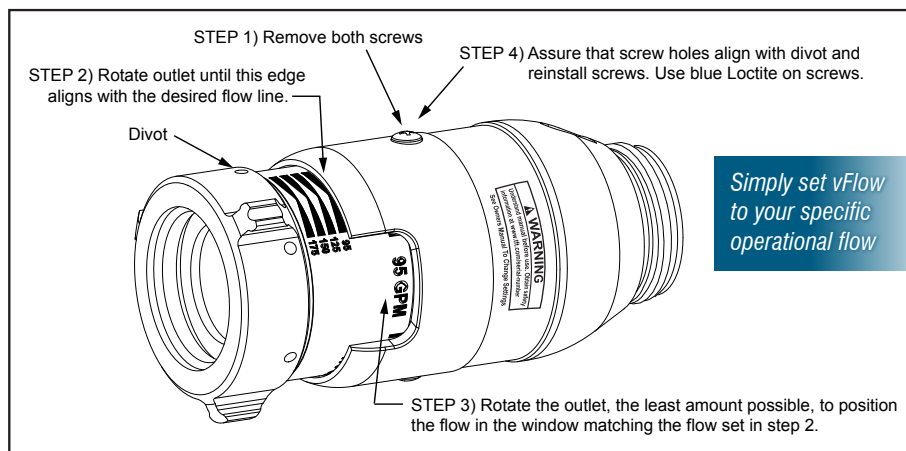


- You'll Know You've Reached Your Minimum Target Fire Flow, Because You'll Feel It
- Easily Set to Your Specific Operational Fire Flows
- Water Powered Turbine Means No Electronics, or Batteries and Generally No Maintenance
- Rugged Hardcoat Anodized Aluminum with Reflective Labeling

vFlow™ Order Matrix

VF1200E	Inlet	Outlet
Adjustable flow set points of: 95, 125, 150 or 175gpm	1.5" NH Female	1.5" NH Male

The vFlow is intended for handheld use in a hose line with water or solutions of water and foam concentrate. It is not intended for compressed air foam, or other liquids.



Simply set vFlow to your specific operational flow



FlipTip™ Tip Only

The Tip-Only Model is an ideal choice for an addition to any ball valve shut off. Integrating your choice of two smoothbore combinations, the FlipTip quickly and positively allows the initial attack team a choice of flows as well as outstanding stream performance.



FTTF132

- Lightweight and Compact Design
- Tips Easily Removed for Line Extension
- Multiple Smoothbore Choices Both Front and Rear



Front Tip Orifice Choice

FlipTip's front component accepts one of 4 different orifice choices. Providing flows from 50 up to 200gpm, the tip can be easily removed allowing hose to be connected and extended. All tips have knurled swiveling couplings and a unique tapered waterway for maximum stream quality.

Series	Inlet	Style	Rear Tip	Front Tip
FTT	F 1.5" NH Female	1 Tip Only	3 7/8 Inch	1 1/2 Inch
	T 1.5" NPSH Female	2 Valve	4 15/16 Inch	2 5/8 Inch
	J 2.5" NH Female	3 Valve and Pistol Grip	5 1.0 Inch	4 15/16 Inch
			6 1 1/8 Inch	5 1 Inch
			7 1 3/8 Inch	

FlipTip™ with Integrated Ball Shutoff

Integrated with a high volume ball shutoff, the combination FlipTip provides a single nozzle that offers a choice of hard hitting straight streams. The detent style ball shutoff allows positive operator control and the rugged durability of polymer handles and pistol grip.



FTTF341

- Optional Color Coded Pistol Grip and Valve Handle Covers at No Additional Charge
- High Volume Detent Valve for Maximum Performance
- Compact Integrated Design

FlipTip™ Order Matrix

Three series of FlipTips are available. The Tip-Only version offers 5 base orifice choices and 4 tip choices. The FlipTip with Integrated Shutoff version also offers 5 base orifice choices and 4 tip choices, as well as an optional color coded pistol grip and handle covers on the ball style shutoff. The FlipTip with Integrated Shutoff and G-Force Nozzle offers 5 base orifice choices and 18 models of fixed, selectable, or automatic nozzle combinations. Additional rear orifice inserts or front tips can be ordered if flow changes are desired.



FlipTip™ with Integrated Ball Shutoff and G-Force Nozzle

Integrated with a high volume ball shutoff and your choice of G-Force combination nozzle, the FlipTip provides a single nozzle that offers both a hard hitting smoothbore and high performance combination nozzle. The detent style ball shutoff allows positive operator control, choice of 100psi or low pressure 75psi operation, and stainless spinning, cut metal or bonded rubber fog teeth.



- Choice of Fixed, Selectable, or Automatic Tip
- Integrated Combination Nozzle and Smoothbore Base
- Choice of Operational Pressures and Fog Tooth Designs
- Optional Color Coded Pistol Grip and Valve Handle Covers at No Additional Charge

Stream Straightener

To provide maximum stream performance all FlipTip models integrate a lightweight stream straightener directly into the rear coupling system. For high rise operations, where debris can be an issue, or to maximize compressed air foam stream performance, the insert can be easily removed.



FTGF34F1F

Pivot Lock Mechanism

The FlipTip can be quickly and securely changed from small tip to large tip during firefighting operations using a positive twist lock mechanism that prevents unintentional movement. The locking ring is easily rotated with a wet or foamy gloved hand.



Rear Tip Orifice Choice

The rear component of the FlipTip accepts one of 5 different orifice sizes and provides water flows starting at 150gpm. All uniquely tapered tip inserts are designed to offer high performance water or compressed air foam streams, and are held securely in place during rugged initial attack operations.

Series	Inlet		Style		Rear Tip		Pressure Control		Shaper Control		Fog Teeth	
FTG	F	1.5" NH Female	2	Valve	3	7/8 Inch	A	Fixed 150gpm @ 100psi	1	Fixed Tactile Indicator	F	Fixed Molded Rubber
	T	1.5" NPSH Female	3	Valve and Pistol Grip	4	15/16 Inch	B	Fixed 150gpm @ 75psi			S	Spinning Stainless Steel
					5	1.0 Inch	C	Selectable 150gpm @ 100psi			M	Fixed Cut Metal
					6	1 1/8 Inch	D	Selectable 150gpm @ 75psi				
					7	1 3/8 Inch	E	Automatic 150gpm @ 100psi				
							F	Automatic 150gpm @ 75psi				

PRO/pak[®]

Portable Multipurpose Foam System

TFT's PRO/pak foam injection and application system is the ideal choice for rapid vapor suppression with any Class A, AFFF or Alcohol Resistant foam concentrate.

Everything you need is contained in one package that attaches to the end of your 1" or 1.5" fire hose. The PRO/pak has a high impact 2.5 gallon foam reservoir with a built-in eductor that can be set to the ratio of foam or wetting agents being used. A large, easy-open fill port has an indicator to show the type of liquid in the tank. Flow is controlled by a twist grip valve that also functions as a carrying handle.

With three different quick connect nozzles included, the PRO/pak system is capable of producing low or medium expansion finished foam, while operating at low inlet pressures.



UM12

*Individual components
can be purchased separately.
A complete list of accessories and
pricing is available at newforce.tft.com.*



- Rapid Suppression Foam System That Is Rugged, Compact and Lightweight
- Works with any Class A, AFFF or Alcohol Resistant Foam Concentrates
- Inlet Pressures from 40 to 200psi, with a Nominal Flow of 12pgm at 100psi

Model	Coupling	Thread
UM12	1.0"	NH
UM12-NF	1.5"	NH (Angled Coupling)

FOAMJET Foam Attachments



Low and Multi-Expansion foam attachments are designed specifically to enhance foam application performance through the G-Force Series of fixed, selectable gallonage, and automatic nozzles.

Both attachments are easily added or removed using a simple clamping mechanism that attaches to the nozzle's front bumper. Produced from lightweight polymers, both the low expansion and multi-expansion attachments are ideally suited for Class A and flammable liquid applications.


The multi-expansion attachment offers the highest foam expansion and finished foam performance with alcohol resistant foam concentrates (synthetics). The low expansion attachment is ideal for protein and fluoroprotein concentrates.



FJ-LX-G
Low Expansion



FJ-MX-G
Multi-Expansion

 G-Force foam attachments are compatible with the following foam concentrates:
Protein (P)
Fluoroprotein (FP)
Film Forming Fluoroprotein (FFFP)
Alcohol Resistant Fluoroprotein (AR-FP)
Alcohol Resistant Film Forming Fluoroprotein (AR-FFFP)
Aqueous Film Forming Foam (AFFF)
Alcohol Resistant Film Forming Foam (AR-AFFF)
Class A





BlitzForce

PORTABLE MONITOR



BlitzForce Lightweight Portable Attack Monitor

The BlitzForce is one of Task Force Tips' innovative, lightweight, and highly versatile portable attack monitors. Rated up to 500gpm, BlitzForce integrates a low loss waterway with positive locking valve control, and a corrosion resistant anodized and powder coat finish. An exclusive high strength tie-down strap and carbide tipped folding legs offer extreme stability in varying fire environments. With an integral stream shaper for superior reach and penetration performance, the BlitzForce delivers a 20 degree side to side (40 degree total) and a 20 degree to 60 degree up and down range of stream motion. A five year warranty, stainless steel apparatus mounting bracket, and your choice of combination nozzle or stacked tips are standard.

Small, Lightweight and Compact Design

Weighing just 14.5 lbs., the BlitzForce stores securely for a rapid deployment in a space of only 19" x 9" x 12", and a ground hugging 26" wide when deployed for initial attack.

High Flow, Low Loss Waterway

Full flow 2" waterway provides 500gpm initial attack flows with only 9psi loss. A removable internal stream straightener is standard, and the valve design provides positive locking in the closed position.

Maximum Stability in Harsh Conditions

High strength folding aluminum alloy legs include replaceable carbide tip spikes and integrated nylon kneepads for maximum stability during operation. The BlitzForce also incorporates an exclusive, quickly deployed, high strength tie down strap to prevent unintentional monitor movement.

High Performance Fire Streams Flexibility

With horizontal rotation of 20 degrees either side of center, and an elevation range 30 to 60 degrees in unmanned mode, or a low 20 degree angle when manned, the BlitzForce provides amazing operational versatility. Each monitor package comes with a choice of a fixed gallonage 500gpm @ 100psi combination nozzle, or triple stacked tips (1", 1 1/4", and 1 1/2") with laser engraved flow charts.



BlitzForce Ordering Matrix

Ground Monitor	Nozzle Type	Bracket	Combination Package Number
XXL111A BlitzForce Portable Monitor with Ball Valve	ZN12A Fixed Gallonage 500gpm @ 100psi	XXL-B Stainless Steel Storage Bracket	XXLG-32 BlitzForce Portable Monitor ZN Combination Nozzle Storage Bracket
	MST-3NJ 3 Stacked Tips: 1.5", 1.25" and 1"		XXLG-42 BlitzForce Portable Monitor Stacked Tips Storage Bracket

Rugged Durability

Each monitor is produced from hard coat anodized aluminum alloy, stainless steel, and is powder coated for maximum corrosion and abrasion resistance. Permanent laser engraved operational instructions, reflective labeling, unique product serialization, and a stainless apparatus mounting bracket are all standard.



A3830

- Package Includes Nozzle Head, Burn Resistant Rubber Hose, 1" Ball Style Shut Off, 1 1/2 x 1" Adapter and a 3/4" Garden Hose Adapter
- Compact, Lightweight and Simple to Deploy
- Ideal for Use in ALL types of Chimney Liners (Metal, Masonry or Ceramic)
- Head Easily Breaks Through Creosote Buildup, Nests or Other Debris

A3830	Price
Nozzle Head, Rubber Hose, 1" Ball Shutoff, 1 1/2 x 1" Adapter, and 3/4" Garden Hose Adapter	\$655.
A3831	Price
Nozzle Head, and 3/4" Garden Hose Adapter	\$260.



The Chimney Snuffer quickly and safely suppresses chimney fires using an ultra-fine spray, greatly reducing potential water damage. The durable 5 pound nozzle head is simply operated by a single firefighter and easily breaks through potential blockages within the chimney.

Eight strategically placed nozzles provide 40 gallons per hour at 60psi, allowing the Chimney Snuffer to be supplied by an attack line, 1" line, or even a garden hose. The entire package weighs less than 15 pounds and is easily stored in an apparatus compartment. The Chimney Snuffer Nozzle head and garden hose adapter can be purchased separately.



TRANSFORMER

PIERCING NOZZLE

Piercing Nozzle System

The Task Force Tips Transformer Piercing Nozzle is designed to deliver water or foam solutions to areas inaccessible to the fire fighter. A series of jets near the point apply a wide reaching pattern at a rated flow of 150gpm at 100psi.



The system includes a unique twist-grip shutoff valve, a 3 port junction block with striking head, 2 extension tubes, and the flow tube with piercing point.



Two 19"
Extension Tubes



14" Flow Tube &
Piercing Point



Twist-Grip
Shutoff Valve



Striking Head &
3 Port Junction Block

The easy to use and rugged, twist-grip shutoff valve, regulates nozzle flow without the need for an additional shutoff valve.

The 3 port junction block and strike head allow the nozzle to be configured to short, medium, long and L shaped combinations, making it easily adaptable to specific fireground situations.

The Transformer Piercing Nozzle features a hardened point, is constructed of hard coated extruded aluminum, and includes a sturdy canvas carrying bag with compartments for each component.

PA1



Canvas Carry Bag

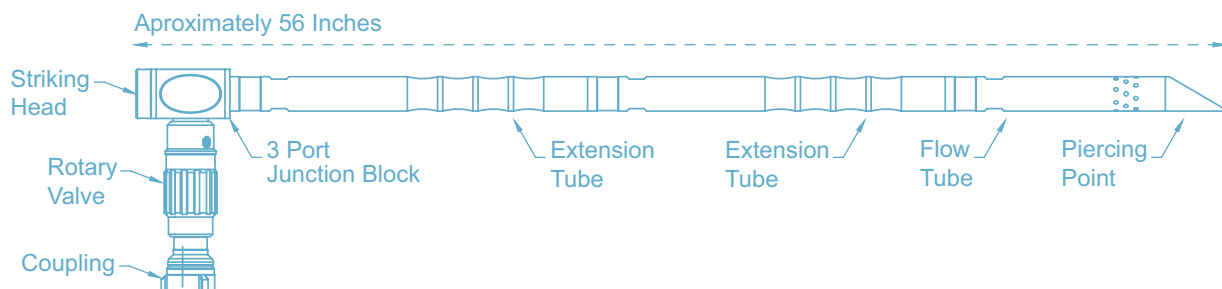


TRANSFORMER

PIERCING NOZZLE



Configuration Examples



- Re-configurable for Specific Fireground Situations
- 150gpm at 100psi
- 3 Port Junction Block and Twist-Grip Shutoff Valve
- Hardened Point

Transformer™ Order Matrix

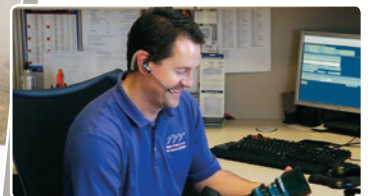
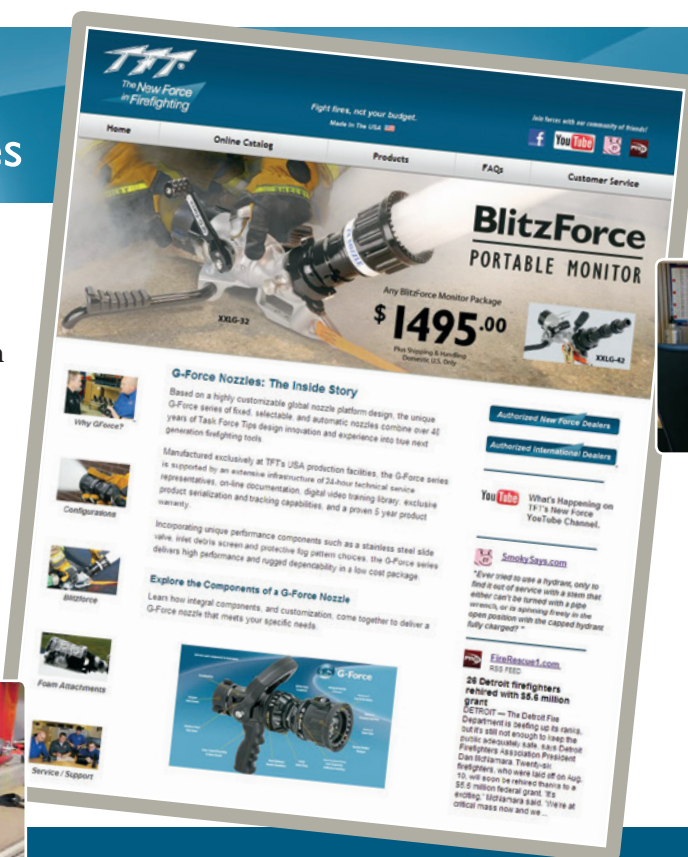
PA 1	Inlet
Package Includes: Twist-Grip Shutoff Valve, 3 Port Junction Block with Striking Head, 2 - 19" Extension Tubes, 1 - 14" Flow Tube with Piercing Point, and Carry Bag	1.5" NH Female

Individual components can be purchased separately. A complete list of accessories and pricing is available at newforce.tft.com.

New Force Resources

You'll find everything you need at newforce.tft.com including:

- On-line Catalog and Product Search
- New Force Product Videos
- Interactive Nozzle Component Tool
- Operational Manuals, Service and Training Information
- Authorized Dealer Look-up
- On-line Technical Library



Every New Force product is backed by TFT's:

- 24 Hour Service Program
- Five Year Warranty
- 24 Hour Technical Service and Support

newforce.tft.com



800-348-2686 • newforce.tft.com

Made In The USA 

Task Force Tips is a worldwide leader in providing first responders with high quality, innovative agent delivery solutions.

www.tft.com



facebook.com/taskforcetips



youtube.com/taskforcetips