



Professional Life Support Products

Celebrating 35 Years of Serving America's First Responders.

Family Owned and Operated.



Made in the U.S.A.

PLSPCORP.COM

300 North Benton Street • P.O. Box 348 • New Athens, Illinois 62264 • 618-475-2135



LARGE PRO FIREFIGHTER CASE- LPFC



Keep your off-duty gear separate from your bunker gear with two segregated pockets. This case has enough space to be your only bag at 8,588 cubic inches.



Floor-to-floor body zipper and two pockets.

FEATURES & SPECS

- 1000 denier Cordura® body
- Stain/water resistant
- Floor-to-floor gorilla zipper
- Front and rear pockets
- Shoulder strap
- Carry handles extend the full body of the case for added strength
- Long handles may also be used in 'backpack' position
- Pockets: 23"W x 15"H x 3"D
- Body: 24"W x 17"H x 16"D
- Capacity: 4.97 cubic feet
- 5-year durability guarantee



Your Logo Here**



LPFC-Black



LPFC-Red



LPFC-Pink

Additional colors available, see color swatch insert.

**See price sheet for details.

PLSPCORP.COM

300 North Benton Street • P.O. Box 348 • New Athens, Illinois 62264 • 618-475-2135



ECONOMY LARGE PRO FIREFIGHTER CASE-ELPFC



With a front and rear pocket for storing additional gear of clothing and the large floor-to-floor main area, this bag is short on economy and big on convenience.

FEATURES & SPECS

- 1000 denier Cordura® body
- Stain/water resistant
- Front and rear pockets
- Strong durable handles
- Long handles may also be used in 'backpack' position
- Floor-to-floor gorilla zipper
- Body: 24"W x 17"H x 16"D
- Pockets: 23"W x 15"H x 3"D
- Capacity: 4.97 cubic feet
- 5-year durability guarantee

Note: Image shown for capacity. Shoulder strap not available on the economy model.



Two spacious pockets for extra gear.



Your Logo Here**



ELPFC-Black



ELPFC-Red



ELPFC-Pink

Additional colors available, see color swatch insert.

**See price sheet for details.

PLSPCORP.COM

300 North Benton Street • P.O. Box 348 • New Athens, Illinois 62264 • 618-475-2135



LARGE FIRST ALARM CASE- LFAC



Pack for duty in the main compartment and off duty in the front pocket. This case presents 7,551 cubic inches of carry possibilities.

FEATURES & SPECS

- 1000 denier Cordura® body
- Stain/water resistant
- Floor-to-floor gorilla zipper
- Carry handles extend the full body of case for added strength
- Long handles may also be used in 'backpack' position
- Front pocket:
23"W x 15"H x 3"D
- Body:
24"W x 17"H x 16"D
- Shoulder strap
- 4.37 Cubic feet capacity
- 5-year durability guarantee



Complete access with floor-to-floor zipper.



Your Logo Here**



LFAC-Black



LFAC-Red



LFAC-Pink

Additional colors available, see color swatch insert.

**See price sheet for details.

PLSPCORP.COM

300 North Benton Street • P.O. Box 348 • New Athens, Illinois 62264 • 618-475-2135



ECONOMY LARGE FIRST ALARM CASE-ELFAC



A spacious bunker gear compartment with a separate storage pocket for clothes, gloves, hoods, etc.



Floor-to-floor access and front pocket.

FEATURES & SPECS

- 1000 denier Cordura® body
- Stain/water resistant
- Floor-to-floor gorilla zipper
- Carry handles
- Long handles may also be used in 'backpack' position
- Body: 24"W x 17"H x 16"D
- Pocket: 23"W x 15"H x 3"D
- Capacity: 4.37 cubic feet
- 5-year durability guarantee

Note: Image shown for capacity. Shoulder strap not included on the economy model.



Your Logo Here**



ELFAC-Black



ELFAC-Red



ELFAC-Pink

Additional colors available, see color swatch insert.

**See price sheet for details.

PLSPCORP.COM

300 North Benton Street • P.O. Box 348 • New Athens, Illinois 62264 • 618-475-2135



LARGE FIREFIGHTER GEAR BAG-LFGB



An easy access bag that allows for upright storage of your bunker gear. The floor-to-floor zipper provides clear access to its 6,515 cubic inches of space.

FEATURES & SPECS

- 1000 denier Cordura® body
- Stain/water resistant
- Floor-to-floor gorilla zipper
- Reinforcing body-webbing
- Carry handles
- Long handles may also be used in 'backpack' position
- Shoulder strap
- Size: 24"W x 17"H x 16"D
- 5-year durability guarantee



Floor-to-floor zipper and shoulder strap.



Your Logo Here**



LFGB-Black



LFGB-Red



LFGB-Pink

Additional colors available, see color swatch insert.

**See price sheet for details.

PLSPCORP.COM

300 North Benton Street • P.O. Box 348 • New Athens, Illinois 62264 • 618-475-2135



ECONOMY LARGE FIREFIGHTER GEAR BAG-ELFGB



You'll get plenty of gear into the large 6,515 cubic-inch compartment of our large economy gear bag. Store and transport the job's essentials.



Floor-to-floor zipper for full access.

FEATURES & SPECS

- 1000 denier Cordura® body
- Stain/water resistant
- Floor-to-floor gorilla zipper
- Durable carry handles
- Long handles may also be used in 'backpack' or over-shoulder positions
- Size: 24"W x 17"H x 16"D
- Capacity: 3.77 cubic feet
- 5-year durability guarantee

Note: Image shown for capacity. Shoulder strap not included on the economy model.



Your Logo Here**



ELFGB-Black



ELFGB-Red



ELFGB-Pink

Additional colors available, see color swatch insert.

**See price sheet for details.

PLSPCORP.COM

300 North Benton Street • P.O. Box 348 • New Athens, Illinois 62264 • 618-475-2135



MEDIUM PRO FIREFIGHTER CASE- MPFC



When 2.67 cubic feet isn't enough to get the job done....add two pockets and a helmet clip! Substantial body area and pockets to handle the assignment.



Shown with helmet attached to clip.

FEATURES & SPECS

- 1000 denier Cordura® body
- Stain/water resistant
- Floor-to-floor gorilla zipper
- Two pockets, both: 15"W x 17"H x 3"D
- Carry handles extend the full body of case for additional strength
- Shoulder strap
- Helmet clip
- Capacity: 3.55 cubic feet
- 5-year durability guarantee



Your Logo Here**



MPFC-Black



MPFC-Red



MPFC-Pink

Additional colors available, see color swatch insert.

**See price sheet for details.

PLSPCORP.COM

300 North Benton Street • P.O. Box 348 • New Athens, Illinois 62264 • 618-475-2135



ECONOMY MEDIUM PRO FIREFIGHTER CASE-EMPFC



Two roomy pockets and a substantial main compartment offer 6,134 cubic inches of spacious carrying and storage capacity.



Two pockets and external helmet clip.

FEATURES & SPECS

- 1000 denier Cordura® body
- Stain/water resistant
- Floor-to-floor gorilla zipper
- Strong nylon carry handles
- Long handles may also be used over shoulder
- External helmet clip
- Two pockets:
15"W x 17"H x 3"D each
- Main compartment:
16"W x 18.5"H x 16"D
- Capacity: 3.55 cubic feet
- 5-year durability guarantee

Note: Image shown for capacity. Shoulder strap not available with the economy model.



Your Logo Here**



EMPFC-Black



EMPFC-Red



EMPFC-Pink

Additional colors available, see color swatch insert.

**See price sheet for details.

PLSPCORP.COM

300 North Benton Street • P.O. Box 348 • New Athens, Illinois 62264 • 618-475-2135



MEDIUM FIRST ALARM CASE- MFAC



Transport all your duty essentials. A generous front pocket combines with the spacious main compartment to give you 5,374 cubic inches of storage potential.



Helmet hook and floor-to-floor zipper.

FEATURES & SPECS

- 1000 denier Cordura® body
- Stain/water resistant
- Floor-to-floor gorilla zipper
- 15"W x 17"H x 3"D pocket
- 16"W x 18.5"H x 16"D body
- Carry handles extend the full body of the bag for additional structure & support
- Shoulder strap
- Helmet hook
- 3.11 cubic feet capacity
- 5-year durability guarantee



Your Logo Here**



MFAC-Black



MFAC-Red



MFAC-Pink

Additional colors available, see color swatch insert.

**See price sheet for details.

PLSPCORP.COM

300 North Benton Street • P.O. Box 348 • New Athens, Illinois 62264 • 618-475-2135



ECONOMY MEDIUM FIRST ALARM CASE-EMFAC



This bag provides features you don't expect to find in an economy case: It comes with a gear-eating main compartment, helmet hook, and front pocket.



Convenient front pocket and helmet clip.

FEATURES & SPECS

- 1000 denier Cordura® body
- Stain/water resistant
- External helmet clip
- Floor-to-floor gorilla zipper
- Sturdy carry handles
- Long handles may also be used over shoulder
- Body: 16"W x 18.5"H x 16"D
- Pocket: 15"W x 17"H 3"D
- Capacity: 3.11 cubic feet
- 5-year durability guarantee

Note: Image shown for capacity. Shoulder strap not available on the economy model.



Your Logo Here**



EMFAC-Black



EMFAC-Red



EMFAC-Pink

Additional colors available, see color swatch insert.

**See price sheet for details.

PLSPCORP.COM

300 North Benton Street • P.O. Box 348 • New Athens, Illinois 62264 • 618-475-2135



MEDIUM FIREFIGHTER GEAR BAG-MFGB



4,614 cubic inches of reinforced carry and storage space. This bag will accommodate all of the essentials for extreme readiness.

FEATURES & SPECS

- 1000 denier Cordura® body
- Stain/water resistant
- Floor-to-floor gorilla zipper
- Reinforcing body webbing
- External helmet clip
- Carry handles
- Shoulder strap
- Size: 16"W x 18.5"H x 16"D
- Capacity: 2.67 cubic feet
- 5-year durability guarantee



Helmet and shoulder strap attached.



Your Logo Here**



MFGB-Black



MFGB-Red



MFGB-Pink

Additional colors available, see color swatch insert.

**See price sheet for details.

PLSPCORP.COM

300 North Benton Street • P.O. Box 348 • New Athens, Illinois 62264 • 618-475-2135



ECONOMY MEDIUM FIREFIGHTER GEAR BAG-EMFGB



With a 2.67 cubic feet, full-access body, this bag will easily handle your bunker boots, pants and coat. The external helmet clip completes the essentials.



Shown with helmet attached with clip.

FEATURES & SPECS

- 1000 denier Cordura® body
- Stain/water resistant
- Floor-to-floor gorilla zipper
- Durable carry handles
- Long handles may also be used over shoulder
- Sturdy external helmet clip
- Size: 16"W x 18.5"H x 16"D
- Capacity: 2.67 cubic feet
- 5-year durability guarantee

Note: Image shown for capacity. Shoulder strap and support webbing not included on the economy model.



Your Logo Here**



EMFGB-Black



EMFGB-Red



EMFGB-Pink

Additional colors available, see color swatch insert.

**See price sheet for details.

PLSPCORP.COM

300 North Benton Street • P.O. Box 348 • New Athens, Illinois 62264 • 618-475-2135



PULL-TOP GEAR BAG-PTGB



This pull-top bag provides 6,930 square inches of gear-chomping storage. The zippered and velcro top panel is released with a quick-rip strap for speedy access.

FEATURES & SPECS

- 1000 denier Cordura® body
- Stain/water resistant
- Velcro and zipper-secured main compartment
- Quick-Rip access strap
- Reinforcing body webbing
- Two saddle pockets:
14"W x 15"H x 3"D and
14"W x 15"H x 8"D
- Main compartment:
22"W x 15"H x 14"D
- Front accessory pouch
- Carry handles
- Shoulder strap
- Capacity: 4 cubic feet
- 5-year durability guarantee



A total of four compartments for your gear.



Your Logo Here**



PTGB-Black



PTGB-Red



PTGB-Pink

Additional colors available, see color swatch insert.

**See price sheet for details.

PLSPCORP.COM

300 North Benton Street • P.O. Box 348 • New Athens, Illinois 62264 • 618-475-2135



BASIC PULL-TOP GEAR BAG-BPTGB



This bag features a top panel secured with zippers and velcro that are released with a quick pull of a strap—revealing the cavernous 6,300 cubic-inch body.



"Quick-rip" access handle to contents.

FEATURES & SPECS

- 1000 denier Cordura® body
- Stain/water resistant
- Velcro and zipper-secured main compartment
- Quick-Rip access strap
- Carry handles
- Reinforcing body webbing
- Shoulder strap
- Size: 28"W x 15"H x 15"D
- Capacity: 3.25 cubic feet
- 5-year durability guarantee



Your Logo Here**



BPTGB-Black



BPTGB-Red



BPTGB-Pink

Additional colors available, see color swatch insert.

**See price sheet for details.

PLSPCORP.COM

300 North Benton Street • P.O. Box 348 • New Athens, Illinois 62264 • 618-475-2135



EXTRA LARGE FIRE DEPARTMENT CARRY ALL CASE-XLFDCAC



4,908 cubic inches of situational readiness. Store and transport the tools and equipment needed to save time in the line of duty.



Cribbing, gloves, rope...it all fits.

FEATURES & SPECS

- 1000 denier Cordura®
- Stain/water resistant
- Heavy webbing for added holding strength
- Floor-to-floor gorilla zipper
- Writable contents strip
- Reinforcing body webbing
- Durable carry handles
- Size: 26"W x 10.5"H x 8"D
- Capacity: 2.84 cubic feet
- 5-year durability guarantee



Your Logo Here**



XLFDAC-Black



XLFDAC-Red



XLFDAC-Blue

Additional colors available, see color swatch insert.

**See price sheet for details.

PLSPCORP.COM

300 North Benton Street • P.O. Box 348 • New Athens, Illinois 62264 • 618-475-2135



LARGE FIRE DEPARTMENT CARRY ALL CASE-LFDCAC



Storing and transporting all the tools you need to take decisive action will be a no-brainer with this case. 2,143 cubic inches of space will serve you well.



Room for elongated and odd-shaped tools.

FEATURES & SPECS

- 1000 denier Cordura® body
- Stain/water resistant
- Durable carry handles
- Full access gorilla zipper
- Writable contents strip
- Size: 26"W x 10.5"H x 8"D
- Capacity: 1.24 cubic feet
- 5-year durability guarantee



Your Logo Here**



LFDCAC-Black



LFDCAC-Red



LFDCAC-Blue

Additional colors available, see color swatch insert.

**See price sheet for details.

PLSPCORP.COM

300 North Benton Street • P.O. Box 348 • New Athens, Illinois 62264 • 618-475-2135



MEDIUM FIRE DEPARTMENT CARRY ALL CASE-MFDCAC



Full-access zippering makes for quick loading and unloading of this case. Ample space (1,292 cubic inches) for essential and task specific supplies.



Save time, write what's inside on contents bar.

FEATURES & SPECS

- 1000 denier Cordura® body
- Stain/water resistant
- Floor-to-floor gorilla zipper
- Strong nylon carry handles
- Writable contents strip
- Size: 17"W x 9.5"H x 8"D
- Capacity: .75 cubic feet
- 5-year durability guarantee



Your Logo Here**



MFDCAC-Black



MFDCAC-Blue



MFDCAC-Red

Additional colors available, see color swatch insert.

**See price sheet for details.

PLSPCORP.COM

300 North Benton Street • P.O. Box 348 • New Athens, Illinois 62264 • 618-475-2135



LADDER PADS-LP002



High-visibility ladder pads provide safety from accidental injury. They are padded on all sides and a tether is available to keep them in place when not in use.



Attachment straps and storage tab.

FEATURES & SPECS

- 1000 denier Cordura® body
- Stain/water resistant
- High visibility graphics
- 1-inch foam padding
- 2 adjustable side release buttons
- Three sizes available:

Sizes	Width	Height	Deep
M	5"	22"	10"
L	9"	23"	10"
XL	12"	27"	10"

- D-tab for hanging
- Optional transport strap for secure storage
- 5-year durability guarantee



Your Logo Here**



Attachment straps



Can't miss graphics.



Transport strap avail.

Additional colors available, see color swatch insert.

**See price sheet for details.

PLSPCORP.COM

300 North Benton Street • P.O. Box 348 • New Athens, Illinois 62264 • 618-475-2135



DELUXE FACEPIECE CASE- VPC



Transport your mask, hood and gloves and additional scene tools all in this convenient 768 cubic-inch package.



Three colors to choose from.

FEATURES & SPECS

- 1000 denier Cordura® body
- Stain/water resistant
- Strong nylon carry handles
- Full access gorilla zippering
- Size: 12"W x 8"H x 8"D
- Capacity: .5 cubic feet
- 5-year durability guarantee



Your Logo Here**



DFC-Black



DFC-Red



DFC-Yellow

Additional colors available, see color swatch insert.

**See price sheet for details.

PLSPCORP.COM

300 North Benton Street • P.O. Box 348 • New Athens, Illinois 62264 • 618-475-2135



VENTED FACEPIECE CASE-VFC



The nylon venting is positioned at the bottom for ventilation during storage.

FEATURES & SPECS

- 1000 denier Cordura®
- Stain/water resistant
- Nylon mesh venting*
- 1-inch velcro closure
- Carry/storage handle
- Size: 14" wide x 16" Tall
- Three colors:

Color	Product Num.
Black	VFC-Blk, FC-Blk
Yellow	VFC-Ylw, FC-Ylw
Red	VFC-Red, FC-Red

- 5-year durability guarantee
- * Vented (VFC) model only

FACEPIECE CASE-FC



No venting



Nylon venting

Additional colors available, see color swatch insert.

**See price sheet for details.

PLSPCORP.COM

300 North Benton Street • P.O. Box 348 • New Athens, Illinois 62264 • 618-475-2135



DOUBLE QUICK RESPONSE AIR TANK CASE-DQRATC



The ultimate for storing, protecting and carrying maximum air capacity. This design allows one responder to do the work of four--carry four tanks at once!



Light-weight tank case doubles carry load.

FEATURES & SPECS

- 1000 denier Cordura® body
- Stain/water resistant
- All fabric sides enclose 1-inch foam padding
- Removable full-height divider
- Durable, field-tested carry handles
- 5-year durability guarantee



Your Logo Here**



DQRATC-Black



DQRATC-Red



DQRATC-Yellow

Additional colors available, see color swatch insert.

**See price sheet for details.

PLSPCORP.COM

300 North Benton Street • P.O. Box 348 • New Athens, Illinois 62264 • 618-475-2135



SINGLE QUICK RESPONSE AIR TANK CASE-SQRATC



This case carries and stores one SCBA. Foam padding protects the gauge cover valve as well as the fiberglass tank.

FEATURES & SPECS

- 1000 denier Cordura® body
- Stain/water resistant
- 430 denier liner
- 1/2-inch full-body padding
- Durable nylon handles
- Strong gorilla zipper
- Size: 24"W x 8.5"H x 8"D
- 5-year durability guarantee



Single-tank SCBA case with durable handles.



Your Logo Here**



SQRATC-Black



SQRATC-Yellow



SQRATC-Red

Additional colors available, see color swatch insert.

**See price sheet for details.

PLSPCORP.COM

300 North Benton Street • P.O. Box 348 • New Athens, Illinois 62264 • 618-475-2135



GLOVE STRAPS-GS



Keep track of your gloves with a durable and size-adjustable strap that clips to your bag or bunker gear.

FEATURES & SPECS

- 1" wide Polypro webbing strap
- Stain/water resistant
- Adjustable velcro sizing
- Metal attachment clip
- Two colors available: GS-Red, GS-Yellow
- 5-year durability guarantee

UNIVERSAL SHOULDER STRAP-SS

Durable Nylon



45" X 2" with triple-bar shoulder slide

LADDER PAD TETHER-US



52" X 1" Nylon with D-Ring



Doing Business

Pricing Guide

Customization

Doing Business with Us is Easy.

Professional Life Support Products is a third-generation company that strives to produce the highest-quality, most-functional emergency responder gear available. Since our founding, our goal has been to partner with our customers by combining high-value products with an order fulfillment process that is as resource-friendly for your company as possible.

Simple Ordering

WE WANT YOUR BUSINESS!

We currently accept orders by telephone, email, or fax . We are in the process of redesigning our website to accommodate online ordering and payments.

Telephone: 618.475.2135

Fax: 618.475.3238

Email: ordersupport@plspcorp.com

Billing/Payments Terms

YOU GET PAID BEFORE WE DO!

We get it, cashflow management is important. So we offer 45-day terms to help you do just that.

Call or email for more information!

We accept checks, money orders, and most major credit cards, with online payments coming soon.

Drop-Ship Program

NO NEED TO TIE UP CASH IN INVENTORY AND SAVE ON SHIPPING LABOR!

Provide us with your return address labels and we will ship your orders directly from our production facility to your customer(s). Our company information does not appear on the packaging. Shipping charges are added to your invoice.

Your're your customers' resource.

Returns and Warranty

WE STAND BEHIND OUR PRODUCTS.

If for any reason you are not satisfied with our workmanship or the quality of our materials, please call or email us and we will set up a replacement, repair or return*. Simple.

Telephone: 618.475.2135

Email: ordersupport@plspcorp.com

*Product returned within 30 days eligible for refund, after 30 days 5-year warranty applies.

PLSPCORP.COM

300 North Benton Street • P.O. Box 348 • New Athens, Illinois 62264 • 618-475-2135



Customizing Your Order

We offer several programs to customize orders for you and your customers**:

Additional stock and non-stock colors (See color swatches on back page.)

Adding your custom logo to the front panel

Free label/tag installation during the assembly of select items***

We will also consult with you to discuss creating and producing your own bag/case ideas!

Custom Logo Program

Our products (where applicable) come standard with our stock, traditional responder logos.

Provide us with your logo in a high-quality (300+ dpi) pdf, png, jpeg, tiff, psd or ai file, and we will work with it to make it fit the front panel of the chosen product(s).



Logo pricing:

Single-Color.....\$3.00* (USD)

Multicolor.....Contact for price

*12-piece Minimum

Free Labeling Program



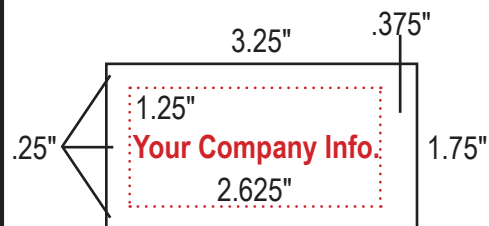
Many of our dealers who order logoed products for their customers like to add a 'reminder' for their customers of who provided such durable, high-quality products.

To address this, we can install our standardized label to the outside [1] or inside [2] of the item during construction.



Specifications

To participate in this **FREE** program, provide us with labels/tags that comply with the following: textile material, thickness of no more than 4 sheets of 20-LB paper, using the following dimensions.



**Available on select PLSP products only.

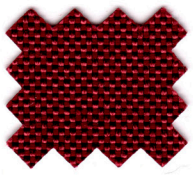
***Location of label/tag is limited by our sewing process.

PLSPCORP.COM

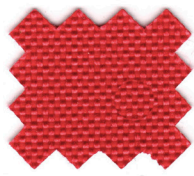
300 North Benton Street • P.O. Box 348 • New Athens, Illinois 62264 • 618-475-2135



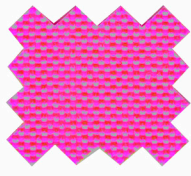
1000 DENIER CORDURA® COLOR OPTIONS



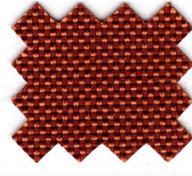
Wine



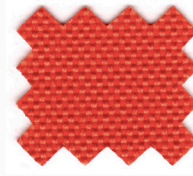
Red



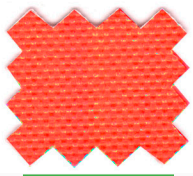
Neon Pink



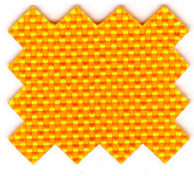
Rust



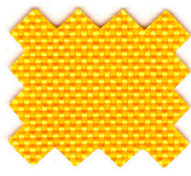
Orange



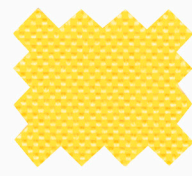
Fluorescent
Orange



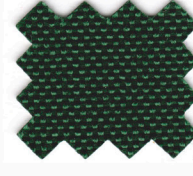
Mango



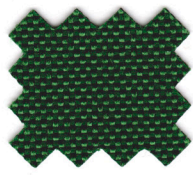
Gold



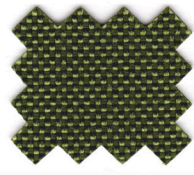
Yellow



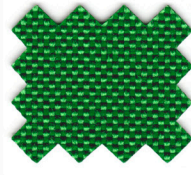
Hunter Green



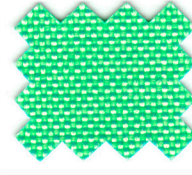
Forest Green



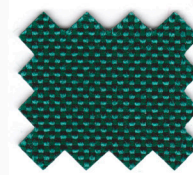
Olive



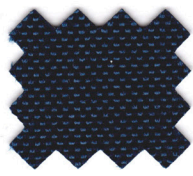
Kelly Green



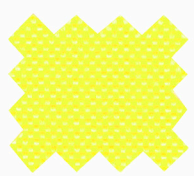
Neon Green



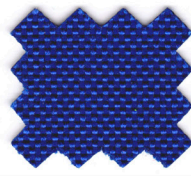
Teal



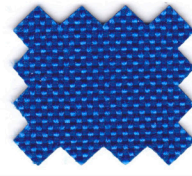
Navy Blue



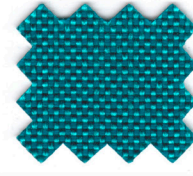
Neon Yellow



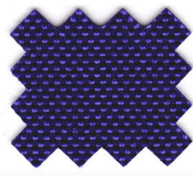
Mariner



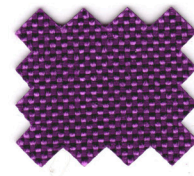
Royal Blue



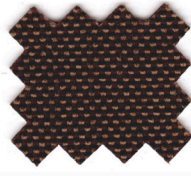
Caribbean



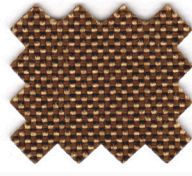
Purple



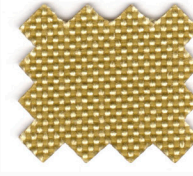
Grape



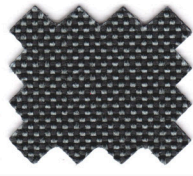
Dark Brown



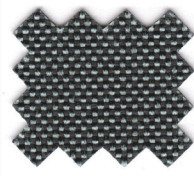
Coyote



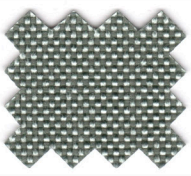
Beige



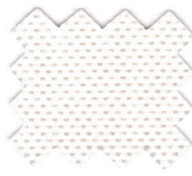
New Smoke



Smoke



Silver



White



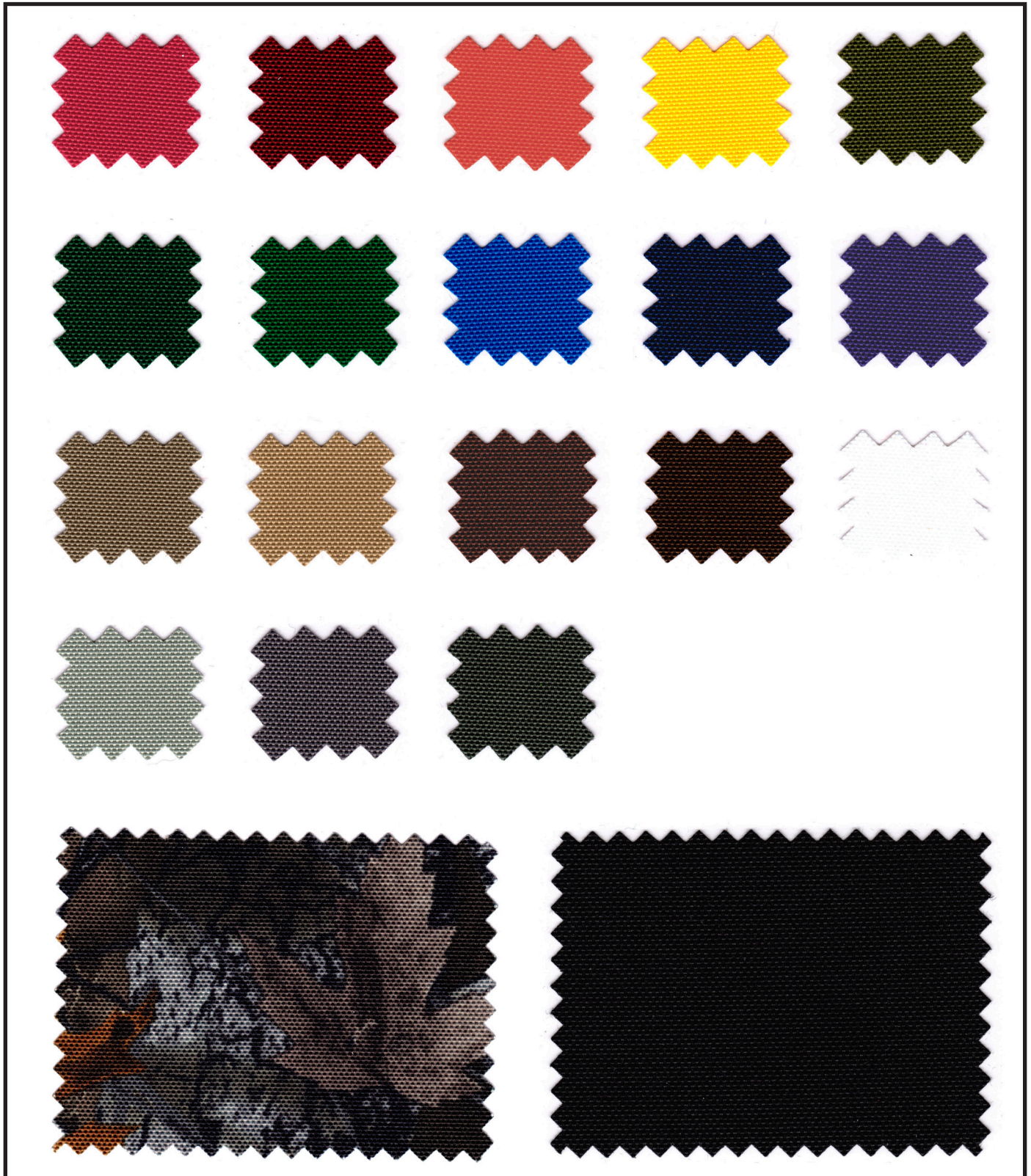
Black

In-stock colors

Special-order colors. Call for availability, delivery estimates and pricing.

PLSPCORP.COM

300 North Benton Street • P.O. Box 348 • New Athens, Illinois 62264 • 618-475-2135



Call for availability and delivery estimates.

PLSPCORP.COM

300 North Benton Street • P.O. Box 348 • New Athens, Illinois 62264 • 618-475-2135