

# **FIRE TRUCK HARDWARE AND FLUID HANDLING PRODUCTS**



**QUALITY FIRE TRUCK AND INDUSTRIAL  
ADAPTERS, FITTINGS AND HARDWARE  
AT COMPETITIVE PRICES**

January 2020

---

# South Park Corporation

South Park Corporation provides high quality fluid handling couplings, fittings, and hardware castings to fire equipment and water metering companies and dealers and manufacturers throughout the country.

In business for more than 80 years, South Park Corporation distributes products to all 50 states as well as many foreign countries. We are dedicated to providing manufacturers and dealers of fire fighting apparatus, vehicle manufacturers, industrial couplings and water meter manufacturing companies with cast products of the finest workmanship and materials at reasonable prices.

All South Park products are guaranteed against inferior workmanship and materials and will be replaced without cost if the items are neither intentionally abused nor accidentally damaged.

Please call us for the latest catalog or visit our website for complete, updated product information.

If you wish to establish an account, please visit our website and open your online account with us!

## A wide range of products...

This catalog contains most of our standard stock brass and zinc items currently manufactured. More than 99 percent of the products listed in our catalog are domestically made. Occasionally, however, a product may be produced offshore. Should you have need for special items not shown or listed, please contact us.

## Custom design for special needs...

Our long experience in designing and manufacturing specialized brass hardware and fittings for special applications has uniquely prepared us to help you with any request.

## High quality with a selection of finish...

South Park products are made of the highest quality materials in a number of finishes.

## Reliable service and price...

A one-piece order or one hundred—South Park Corporation assures you fair, honest, competitive prices, quality products, and prompt service.

# Contents

Adapters .....	1
Couplings .....	2
Caps and plugs .....	3
Elbows .....	4
Storz Couplings .....	6
Valves .....	8
Wrenches .....	10
Mounting plates .....	12
Parts and accessories .....	12
Truck hardware .....	13

## Adapters

*Our full line of brass adapters and reducers are available in any size, lug and thread combinations, and carry a 500 psi rating. Custom thread sizes are available, please be sure to specify your specific customer thread requirements if they differ from standard sizes. Refer to inside back cover, Method To Determine Correct Thread Dimensions.*

### Female-by-male adapter, rocker lug

Rigid adapter furnished in all sizes. Plain brass, chrome or aluminum finish. Rocker lug. Sizes: 1 in. – 6 in.

A-37



AA-37

### Female-by-male adapter, long handle

Furnished from 3 ½ in. – 6 in. combinations. Plain brass or chrome finish. For smaller sizes see A-37.

LHA-40



### Double male adapter, rocker lug

Furnished with same thread on both ends or reducing style. Rocker lug. Specify style and finish. Aluminum finish available.

DMA-38



ADM-07510

### Swivel adapter

Single hose thread swivel one end by rigid hex NPT or hose thread male. Sizes: 1 ½ in. – 3 in. Aluminum finish available.

SA-39



ASA-1510

### Swivel adapter with screen

Single hose thread swivel one end by rigid hex NPT or hose thread male. Sizes: 1 ½ in. – 3 in.

SA-39S



### Swivel apparatus elbow, 30° bend

2 ½ in. × 2 ½ in. = 30° Bend  
3 in. × 3 in. = 30° Bend  
4 in. × 4 in. = 30° Bend

SE-3930



### Swivel apparatus elbow, 45° bend

1 ½ in. × 1 ½ in. = 45° Bend  
2 ½ in. × 2 ½ in. = 45° Bend  
3 in. × 2 ½ in. = 45° Bend

SE-3945



## Adapters (con't)

### Hydrant connection, three piece long handle

Furnished with swivels on both ends. Plain brass or chrome finish.

DSHC-42



### Double female connection, three piece rocker lug

Furnished with rocker lug swivels on both ends. Plain brass, chrome or aluminum finish. Sizes: 1 ½ in. – 6 in.

DF-44



ADF-44



## Couplings

*We can supply almost any thread and type of fitting needed. Specify finish when ordering. All bushings and nipples are made of brass and carry a 500 psi rating.*

### Extension coupling, internal lug

Finish is plain brass or polished chrome. 2 ½ in. NPT by 2 ½ in. NHM by 4 in. long.

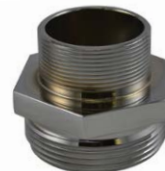
IL-31E



### Nipple, hex

Hex-center brass hose nipple, stocked with NPT × NST. Sizes: 1 in. – 3 in.

HDM-32



### Swivel coupling, without screen

Single hose thread swivel one end by rigid NPT internal lug female. Available in aluminum finish. Sizes: 1 ½ in. – 6 in. Rocker Lug Swivel, 1 ½ in. – 3 in. Long Handle Swivel, 4 in. – 6 in.

SDF-33



ASDF-1515



### Swivel coupling, with screen

Single hose thread swivel one end by rigid NPT internal lug female. Sizes: 1 ½ in. – 6 in. Rocker Lug Swivel, 1 ½ in. – 3 in. Long Handle Swivel, 4 in. – 6 in.

SDF-33S



### Female-to-male coupling, hex

Rigid brass bushing stocked with NPT female by NHT male.

HFM-34





## Couplings (con't)

### Internal lug coupling, without screen

IL-35

Female NPT by male hose thread bushing with internal lugs.  
Sizes: 1 ½ in. – 6 in.



### Internal lug coupling, with screen

IL-35S

Female NPT by male hose thread bushing with internal lugs.  
Sizes: 1 ½ in. – 6 in.



### Hydrant conversion coupling

HCB-7

Coupling threads on to existing hydrant nipple for converting to NST. Locking set screw on female side for permanent installation.  
Sizes: 2 ½ in. – 4 in. – 4 ½ in.



## Caps and plugs

*Please specify size, thread and finish when ordering. All caps and plugs are brass and available in any thread or finish desired.*

### Pressure cap, long handle

LHC-26P

Plain face cap with recessed long handles.  
Sizes: 2 ½ in. – 6 in., 500 psi rating.



### Hose cap, rocker lug

HC-27

Sizes: 1 in. – 6 in., 500 psi rating



### Hose cap, rocker lug with chain

HCC-28

Sizes: 1 in. – 6 in., 500 psi rating. Also available in aluminum.



AHCC-10

### Hose plug, rocker lug

HP-29

Sizes: 1 ½ in. – 6 in., 500 psi rating



### Hose plug, rocker lug with chain

HPC-30

Sizes: 1 ½ in. – 6 in., 500 psi rating. Also available in aluminum.



AHPC-10

## Caps and plugs (con't)

### Hydrant cap

Made of cast iron with pentagon nut, painted finish.  
Sizes: 2 ½ in. and 4 ½ in.

HC-73



### Hydrant cap, with chain and ring

Made of cast iron with pentagon nut, painted finish.  
Sizes: 2 ½ in. and 4 ½ in.

HCC-73



### Storz blind caps, with rocker lug swivel and chain

Sizes: 1 in. – 6 in.

ST82

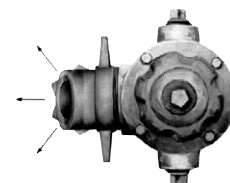


## Elbows

### Hydrant flushing elbow

Designed to help overcome the problems created when flushing a hydrant. This elbow attaches to the hydrant outlet and directs the discharge away from ground cover and out of street traffic. Available in 2 ½, 4 and 4 ½ in. sizes. See price sheet for thread options.

HFE-25



*Top view of fire hydrant with the HFE-25 Hydrant Flushing Elbow attached showing its 360° rotation.*

### Discharge elbow, 90° bend without flange

MDE-77

#### Discharge elbow, 90° bend

1 ½ in. NPT free swivel × 1 ½ in. NST M

#### Discharge elbow, 90° bend

2 in. NPT free swivel × 1 ½ in. NST M

#### Discharge elbow, 90° bend

2 ½ in. NPT free swivel × 2 ½ in. NST M



## Elbows (con't)

### Discharge elbow, 90° bend with flange

#### Discharge elbow, 90° bend

2 in. NPT free swivel × 1 ½ in. NST M with mounting leg  
(also available in 2 ½ in. × 2 ½ in. size)

#### Discharge elbow, 90° bend

2 ½ in. NPT free swivel × 2 ½ in. NST M with 4-hole mounting flange

#### Discharge elbow, 90° bend

2 in. Vitalic × 1 ½ in. NST M with mounting leg

#### Discharge elbow, 90° bend

2 in. Vitalic × 1 ½ in. NST M with 4-hole mounting flange

MDE-77F



MDE-77F25b

### Swivel apparatus elbow, 30° bend

3 in. × 3 in. = 30° Bend

4 in. × 4 in. = 30° Bend

SE-3930



### Swivel apparatus elbow, 45° bend

1 ½ in. × 1 ½ in. = 45° Bend

2 ½ in. × 2 ½ in. = 45° Bend

3 in. × 2 ½ in. = 45° Bend

SE-3945



### Storz swivel elbow, 30° bend, long handle

Inlet sizes, 4 in. – 5 in.

Outlet sizes, 4 in. NH – 6 in. NH

ST80



### Storz swivel elbow, 30° bend, rocker lug

Inlet sizes, 4 in. – 5 in.

Outlet sizes, 4 in. NH – 6 in. NH

ST81



## Storz Couplings

### Storz blind caps, with rocker lug swivel and chain

Sizes: 1 in. – 6 in.

ST82



### Storz straight female swivel, rocker lug

Storz sizes: 2 ½ in. – 5 in.

Female swivel sizes: 2 ½ in. – 6 in. NH

ST83



### Storz straight female swivel, long handle

Storz sizes: 4 in. – 6 in.

Female swivel sizes: 4 in. – 6 in. NH

ST84



### Storz straight female rigid, rocker lug

Storz sizes: 2 ½ in. – 5 in.

Male rigid sizes: 2 ½ in. – 6 in. NH

ST85



### Storz straight male rigid, rocker lug

Storz sizes: 4 in. – 6 in.

Female rigid sizes: 4 in. – 6 in. NH

ST86



### Storz swivel elbow, 30° bend, long handle

Inlet sizes, 4 in. – 5 in.

Outlet sizes, 4 in. – 6 in. NH

ST80



### Storz swivel elbow, 30° bend, rocker lug

Inlet sizes, 4 in. – 5 in.

Outlet sizes, 4 in. – 6 in. NH

ST81





## Butterfly valves with hose threads & Storz connection

See butterfly valve section for options and sizes on page 9.

BV-78 and  
BV-78H



## Storz wrenches, set of 4 with bracket

Wrench Sizes: 4 in. – 5 in.

ST87



## Storz wrenches, set of 4 with bracket

Wrench Sizes: 2 ½ in. – 5 in.

ST87



## Storz single end spanner wrenches

1 ½ in. – 2 ½ in.

2 in. – 2 ½ in. – 3 in.

2 ½ in. – 5 in.

4 in. – 5 in. universal hydrant spanner

4 in. – 5 in. – 6 in.

4 in. – 6 in.

6 in.

ST88



## Storz accessories

Stainless steel screens for 4 in. and 5 in. Storz

Storz mounting bracket 2, 3, 4, and 5 in.

Storz pressure seal 2.5, 3, 4, 5, and 6 in.

ST89



## Valves

### Push-pull drain valve

$\frac{3}{4}$  in. NPT Valve – push to close, pull to open with  $\frac{3}{4}$  in. inlet and outlet. Sand cast brass body features stainless steel handle which, in closed position, protrudes  $1 \frac{3}{8}$  in. Pull knob of durable thermoset plastic, imprinted “PULL TO DRAIN.”

DV-72



### Push-pull drain valve with flange

$\frac{3}{4}$  in. NPT Valve, same as DV-72 (above) except valve body has flange for mounting directly behind panel.

DV-72F

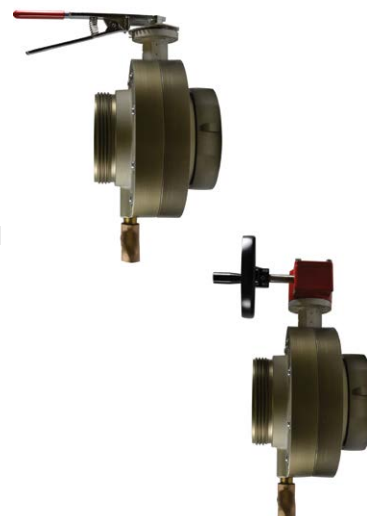


## Butterfly valve with lever handle

BV-78

## Butterfly valve with speed handwheel

BV-78H



### When ordering, please specify options:

- Hose thread flange
- Storz flange
- Storz elbow
- Storz elbow & cap

### Butterfly valve features:

- Lightweight aluminum flanges with hardcoat finish.
- Hose threads furnished with rocker lug, aluminum swivel.
- NPT threaded flanges do not swivel.
- 5 in. or 6 in. aluminum valve body with stainless steel stem, EPDM seat, bubble tight shutoff up to 200 psi and vacuum rating of 29.9 in. mercury; valves have tested up to five times pressure rating without bursting.
- Available with lever handle or speed handwheel gear operator.
- Furnished with  $\frac{3}{4}$  in. push-pull drain valve.
- Available with screen insert (male hose thread end only).
- Valve should be un-capped, opened and allowed to dry completely after each use. Not recommended for use in a continuously wet application.

Gear operator handwheel must be mounted on the right or left side of the valve body for the valve disk open-closed indicator to show the correct position of the valve disk. If the gearbox is mounted so the handwheel is in front of the valve, the open-closed indicator will not indicate the correct position of the valve disk. An optional valve shaft is available to correct this problem. Please call our customer service department for more information.

See price sheet for complete listing of sizes.

## Wrenches

### Adjustable hydrant wrench and spanner

AHW-70

Head made of ductile iron fits pentagon or square hydrant operating nut. Spanner fits rocker or pin lugs. Handle made of  $\frac{7}{8}$  in. diameter steel with knurled hand grip. Bright zinc plated.



### Folding pocket spanner wrench, Cast Brass

PSW-74B

### Folding pocket spanner wrench, Die Cast Zinc

PSW-74Z

Light duty, compact pocket spanner wrench.



### Universal spanner wrench

USW-75

Made of high strength aluminum alloy. Has gas cock slot, window jimmy, belt loop, and hammer head. For pin or rocker lugs.



### Wrench holder bracket

WH-76

#### Wrench holder only, no wrenches

Wrench Holder Bracket now available for two or three wrenches. See price schedule for part numbers.



### Wrench set, 2 wrench set

WH-76-2



### Wrench set, 3 wrench set

WH-76-3





**Storz, 4 wrench set with bracket**

Sizes: 4 in., 5 in.

ST-87



**Storz, 4 wrench set with bracket**

Sizes: 2 ½ in. – 5 in.

ST-87



**Storz single end spanner**

Sizes:

1 ½ in. – 2 ½ in.

2 in. – 2 ½ in. – 3 in.

4 in. – 5 in. – 6 in.

4 in. – 6 in.

6 in.

2 ½ in. – 5 in.

4 in. – 5 in. universal hydrant spanner

ST-88



## Mounting plates

*Be sure to specify correct thread and finish when ordering. Mounting plates are made of brass. Available in all threads and finishes.*

### Female mounting plate

**FMP-47**

Sizes: 1 ½ in. – 6 in.

Made of sand cast brass with polished chrome finish.



### Quic-loc mounting plate

**QL-48Z**

Made of die cast zinc, this quick release equipment holder is available in 1 in., 1 ½ in., 2 in. and 2 ½ in. thread sizes. Chrome finish. Furnished with body gasket.



### Raised mounting plate

**RMP-49**

Self draining with three center mounting holes. Sizes: 1 in. – 6 in.



### Storz mounting plate

**ST-89**

Storz mounting bracket 2, 3, 4, and 5 in.



## Parts and accessories

### Barrel strainer

**BS-45**

Solid brass suction strainer, available with male or female threads. Be sure to specify if male or female when ordering. Sizes: 2 ½ in. – 6 in.



### Corner bracket, cross lay roller

**CLCB-77-Z**

Made of die cast zinc with chrome plate finish. Fits 7/16 in. roller pin.



## Truck hardware

### Bell

#### Fire bell

FB1210C

Large 12 in. Fire Bell, cast in bronze with stand and clapper. Available with either an eagle or acorn nut. Electric striker can be ordered separately and mounted on existing bell stand or complete with bell and hardware as shown below. Polished chrome finish. See Price Sheet for listing of bell parts.



#### Engraving options

Call for Pricing

##### Laser etching

The laser etching process uses computer template and electronically cuts images onto an existing bell. Please allow two to three weeks for completion.

##### Panto engraving

The pantographic engraving process physically carves an image into a polished bell, which is then chrome plated. Cost is usually over 2 ½ times that of etching. Please allow six weeks for completion.

#### Fire bell with electric striker

FB12ES-10C

Same as above with electric striker.



#### Electric striker

FB12-ES

Photo shows electric striker mounted on stand.



## Folding steps

#### Folding step

FS-46Z

Spring holds step firmly in open or closed position. Made of die cast zinc alloy with either chrome or plain zinc finish.



## Large folding step

**LFS-46**

- Conforms to NFPA 1901 and FHA, 49CFR specifications.
- Made of die cast high strength zinc/aluminum alloy.
- Tested to withstand over 2,000 lbs. static load.
- Over 42 square inches of serrated non-skid step pad area. Conforms to NFPA 1901-13-7.3.
- Heavy duty stainless steel spring holds step open or closed.
- Unit will not rust or corrode.
- Furnished with molded rubber mounting gasket to protect truck body and enhance appearance.
- Designed for mounting with  $\frac{5}{16}$  in. diameter Carriage bolts (not supplied).
- Available in textured cast finish or textured chrome plate.



## LED step light

**LFS-46-L**

Designed to mount behind and illuminate the LFS-46 large folding step. Conforms to NFPA standard 1901 specifications. Aluminum body with bright chrome finish, furnished with mounting gasket. The LFS46ZC folding step is sold separately.



*LFS46ZC  
folding  
step sold  
separately.*

## Axe mounts

### Axe strap

**AS-50**

For side mounting application. Made of cast brass with polished chrome finish.



### Axe blade holder

**ZAH-51**

Axe holder, shield type, completely covers axe blade. Made of die cast zinc with textured chrome finish. Furnished with body gasket.



### Side mount axe handle bracket, brass

**SMA-52**

### Side mount axe handle bracket, zinc

**ZSMA-52**

For holding axe handle only; use ZAH-51 for holding blade. Mounts on vertical surface. Polished chrome plate finish. ZSMA-52, furnished with body gasket. Now available with protective sleeve. See price schedule for part number.



### Bottom mount axe bracket

**BMA-53**

Same as SMA-52, except mounts on horizontal surface. Made of sand cast brass with polished chrome plate finish.





## Crowbar mounts

### Crowbar holder set

**CH-54**

Spring-loaded crowbar holder set, for bar of any length. Made of cast brass with polished chrome finish.



### Crowbar holder set, brass

**CHR-55**

### Crowbar holder set, zinc

**CHR-55Z**

Raised style crowbar holder. CH-55 made of sand cast brass with polished chrome finish. CH-55Z made of die cast zinc with textured chrome finish and furnished with body gasket.



## Pike pole mounts

### Pike pole bracket, horizontal mount

**FBP-58**

Made of sand cast brass with polished chrome finish. Fits 1 ½ in. pole.



### Pike pole bracket, horizontal mount

**FBP-58Z**

Made of die cast zinc with chrome plate finish. Sizes available to fit 1 ⅞ in. or 1 ½ in. O.D. pole. Furnished with body gasket. Now available with protective sleeve. See price schedule for part number.



### Pike pole bracket, vertical mount

**SMP-59**

Made of sand cast brass with polished chrome finish. Fits 1 ½ in. pole.



### Pike pole bracket, vertical mount

**SMP-59Z**

Made of die cast zinc with chrome plate finish. Sizes available to fit 1 ⅞ in. or 1 ½ in. O.D. pole. Furnished with body gasket. Now available with protective sleeve. See price schedule for part number.



### Pike pole ring, brass

**PR-61**

### Pike pole ring, die cast zinc

**PR-61Z**

**PR-61** brass with polished chrome finish.  
**PR-61Z** zinc with textured chrome finish, furnished with body gasket.



## Rail mounts

### Flat base end mount rail bracket

ZRB-57

Polished chrome plate finish. Furnished with body gasket.

3 in. end mount rail bracket

3 in. center mount rail bracket

3 in. right and left end mount offset rail brackets



### Thread base end mount rail bracket

TBR-57

**TBR-57C** center mount bracket base threaded with  $\frac{7}{16}$  in. NC thread bored for standard 1  $\frac{1}{4}$  in. rail, 3  $\frac{1}{2}$  in. from base to center of handrail. Made of sand cast brass with polished chrome finish.



### Handrail base plate, brass

HBP-64

### Handrail base plate, die cast zinc

HBP-64Z

For 1  $\frac{1}{4}$  in. stainless tubing. Polished chrome plate finish.

HBP-64Z furnished with body gasket.



## Handles

### Pull handle, brass

PH-60

Polished chrome finish. Specify base thread when ordering.

If not specified,  $\frac{1}{2}$  in. NC thread will be furnished.



### Ladder clamp handle, brass

LC-62

Polished chrome finish. Specify base thread when ordering.

If not specified,  $\frac{1}{2}$  in. NC thread will be furnished.



### Hose clamp handle

HC-63

Sand cast brass with polished chrome finish for 2  $\frac{1}{2}$  in., 4 in., 4  $\frac{1}{2}$  in., 5 in. and 6 in. hose. Be sure to specify hose size and base thread when ordering. If not specified,  $\frac{1}{2}$  in. NC thread will be furnished.



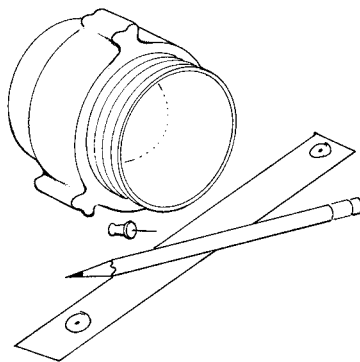
---

## Method To Determine Correct Thread Dimensions

Custom thread sizes are available, please be sure to specify your specific customer thread requirements if they differ from standard sizes.

If you do not have access to a thread gauge and caliper or if a sample cannot be sent with your order, use the following method to determine correct outside diameter and thread pitch for your application.

### Equipment Required:



**Threaded fitting with a male thread end**

**Pencil**

**Push-pin**

**1 in. wide strip of paper**

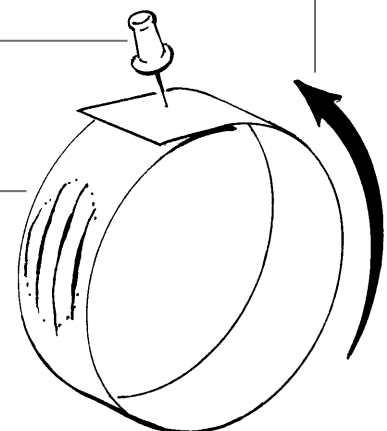
### Steps

1. Cut a strip of paper 1 in. wide and long enough to cover the circumference of the male thread end plus an overlap.
2. Wrap the paper strip around the threads and pierce through both layers of the strip at the overlap.
3. Press your thumb firmly against the thread with enough force to transfer the thread impression to the paper strip.
4. Remove the strip and circle the pinholes with a pencil.
5. Measure the distance between the pinholes and divide by 3.1416. The resulting number is the outside diameter measurement (ODM) of the male fitting.

**Step 2** —  
Pierce through both  
layers at overlap

**Step 3** —  
Transfer impression  
of threads to paper

**Step 1**  
Wrap paper strip  
around threads



**Note:** It is critical that both the threads-per-inch (pitch) and the outside diameter measurement (ODM) for the male thread end are included when ordering. Always include the paper strip with your correspondence. If not otherwise specified, "V" sharp thread will be furnished.

**South Park Corporation**  
**P.O. Box 61**  
**South St. Paul, MN 55075**

**Toll free: 1-800-728-0117**  
**Toll free fax: 1-800-373-1326**

**[www.spcbrass.com](http://www.spcbrass.com)**