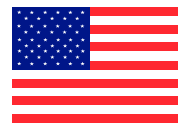


MATJACK-SIMPLY THE BEST!

Matjack High Pressure F/R Series Air Lifting Bags



Made in the USA



CE Certified

INDIANAPOLIS INDUSTRIAL PRODUCTS, INC. dba MATJACK

2320 DUKE STREET

INDIANAPOLIS, INDIANA 46205

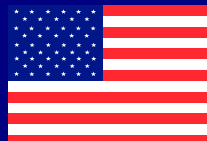
TOLL FREE US & CANADA (800) 827-3755

(317) 359-3078 FAX: (317) 359-3079

EMAIL: sales@matjack.com

Meets or exceeds-

EN13731-2007 and NFPA 1936:2020

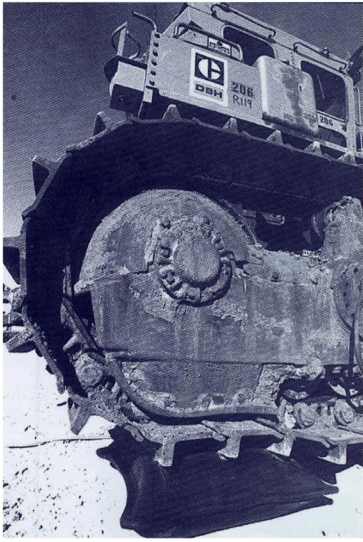


Visit our website
MATJACK
www.matjack.com

ISO 9001:2015 QMS CERTIFIED



MatJack Airbags - Reliable, Safe and Easy-to-Use!



Put MatJacks under a load and inflate! Our hand-held controls have two buttons/switches: inflate and deflate. It's just that easy. Easier than hand jacking or complex air/hydraulic strut systems.

MatJacks will work anywhere you have just over one inch clearance and perform in the most adverse conditions. Use MatJacks in a field, on a highway, throw on sharp gravel, muddy banks, wet grass, or other sloppy conditions. Use instead of conventional jacking methods or turn on edge to shift heavy machinery or objects from a tight corner or wall. MatJacks work where other jacks don't fit or can't handle the load.

Matjacks come with either 3 layers of steel or 4 layers of Kevlar/Aramid on each side, covered with five layers of neoprene rubber and a raised, conical, interlocking surface, **MatJacks are tough and made to grip the load.** MatJacks provide the best traction possible. Each MatJack Kit comes with 20' (6.2m.) of high pressure hose and hand controls so you're safely out from under the load pushing buttons, not too close to the load you are trying to lift.



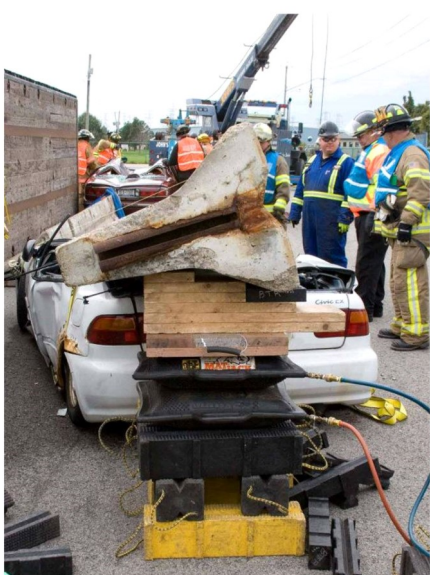
The MatJack Advantage

When you use MatJack Air Lifting Bags you get the advantage of one of the simplest and most versatile tools available today for lifting and moving heavy objects. Used worldwide and are the Gold standard in a variety of industries, MatJacks lift heavy machinery, buildings, trains, bridge sections, tractor trailers and are an integral part of the equipment of thousands of fire and rescue departments and USAR teams. MatJacks are used in every branch of the military. MatJacks are totally manufactured in the USA and have been popular worldwide since 1981.

When you need a tough, versatile air lifting bag get the MatJack Advantage!
Call our toll free number; (800-827-3755) for the name and phone number of the nearest MATJACK dealer in your area.



MATJACK to the Rescue and Recovery!



MatJacks for the Fire & Rescue Industry

When seconds count and lives are on the line, MatJacks can help free victims trapped in wrecked vehicles or collapsed buildings. Since MatJacks now come in different pressure capacities along with our Flat Lift series of Lifting bags. They are here to meet all your lifting requirements, helping to extricate victims quickly and easily. If a human can get there, so can a MatJack.



MatJacks are American-made and built with the high quality and rugged construction you expect when you get the best!

Visit our website

www.matjack.com

MatJacks for Rescue—

Need to lift a vehicle or trailer to get to patients? MatJack can get you the lift you need. MatJacks make capable both confined space and trench rescue due to the various sizes. MatJacks work right off your SCBA bottles or service air on your truck and store easily, with lots of sizes to choose from don't wait until your in a crisis to decide you need one!



**MatJacks Have a
Five-Year Warranty
The Best in the Industry!**



STRENGTH

Visit our website
MAT JACK
www.matjack.com

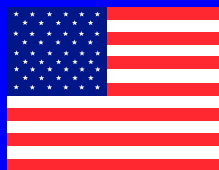
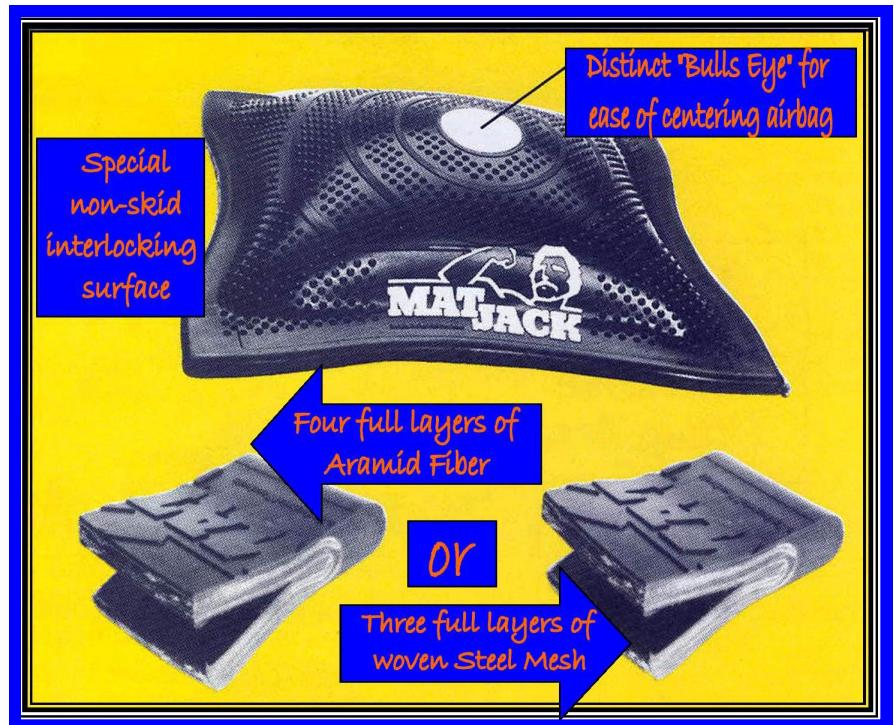
& DURABILITY



Use MatJacks under the most adverse conditions to re-locate, position or remove obstacles, even odd-shaped loads to make entry for Rescue possible. MatJacks air lifting bags are always ready to serve.

MATJACK AIR LIFTING BAGS SIMPLY THE BEST!

- MatJack's unique construction of four full layers of Kevlar/Aramid Fiber or three full layers of woven steel on each side, provide for a lifting bag unequalled in strength and durability. All MatJack air lifting bags are marked with a distinct tonnage numbered centering dot for ease of centering under the load, and have a conical, interlocking surface to limit slippage and aid in stacking. All MatJacks have either carry handles or tabs molded right on for lifting or attaching to fixtures. MatJack Flat Lift bags provide a stable platform to lift from especially when stacking airbags.
- Supply hoses are color coded to help eliminate confusion during simultaneous operation of more than one air bag.
- Available in a variety of sizes and ranging in lifting capacity from 1.5 tons to 126 tons (depending on operating system pressure), the MatJack air lifting bag system is efficient and economical, safe and reliable, making them **SIMPLY THE BEST.**



Matjacks are American-made and built with the high quality and rugged construction you expect when you get the best!



MATJACKS come in variety of sizes for all your lifting needs!



Matjack / Indianapolis Industrial Products, Inc
2320 Duke Street, Indianapolis, Indiana 46205

Phone: (317) 359-3078 Fax: (317) 359-3079

Toll Free US & Canada: (800) 827-3755

Email: sales@matjack.com

Website: www.matjack.com

ISO 9001:2015 Certified



HIGH PRESSURE F/R SERIES AIR LIFTING BAG 120 PSI/8 BAR SPECIFICATIONS

| PART # | MODEL | MATERIAL | DIMENSIONS IN CM | CAPACITY US TONS METRIC TON | LIFTING HEIGHT IN CM | WEIGHT LBS KG | MAX WORKING PRESSURE | SHAPE | HANDLES OR EYELETS/ TABS | VOLUME-AIR CU. FT./ LTR |
|--------|---------|----------|--|-----------------------------------|-------------------------------|---------------------|----------------------------|-----------|-----------------------------------|----------------------------|
| 10120K | 1.5 TON | ARAMID | 6 x 6 x .75in. 15.24 x 15.24 x 1.9cm. | 1.5 1.3 | 2.5 6.3 | 2 .9 | 120 psi. 8 bar | Square | 2 Tabs | .2 / 6.3 |
| 10320K | 3.3 TON | ARAMID | 6 x 12 x .75in. 15.24 x 30.48 x 1.9cm. | 3.3 2.9 | 3 7.6 | 3 1.3 | 120 psi. 8 bar | Rectangle | 4 Tabs | .44 / 12.66 |
| 10620S | 6 TON | STEEL | 10 x 10 x 1.25in. 25.4 x 25.4 x 3.175cm | 6 5 | 4.5 11.4 | 6 2.7 | 120 psi. 8 bar | Square | 4 Tabs | .68 / 19.3 |
| 10620K | 6 TON | ARAMID | 10 x 10 x 1.25in. 25.4 x 25.4 x 3.175cm | 6 5 | 4.5 11.4 | 4 1.8 | 120 psi. 8 bar | Square | 4 Tabs | .68 / 19.3 |
| 11320S | 13 TON | STEEL | 15 x 15 x 1.25in. 38.1 x 38.1 x 3.175cm. | 13 11 | 7.5 19 | 15 6.8 | 120 psi. 8 bar | Square | 4 Tabs | 2.7 / 76.4 |
| 11320K | 13 TON | ARAMID | 15 x 15 x 1.25in. 38.1 x 38.1 x 3.175cm | 13 11 | 7.5 19 | 11 4.9 | 120 psi. 8 bar | Square | 4 Tabs | 2.7 / 76.4 |
| 11520S | 15 TON | STEEL | 15 x 21 x 1.25in. 38.1 x 53.34 x 3.175cm. | 14.8 13.5 | 7.5 19 | 19 9 | 120 psi. 8 bar | Rectangle | 2 Tabs 1 Handle | 3.48 / 98.6 |
| 11520K | 15 TON | ARAMID | 15 x 21 x 1.25in. 38.1 x 53.34 x 3.175cm. | 14.8 13.5 | 7.5 19 | 15 7 | 120 psi. 8 bar | Rectangle | 2 Tabs 1 Handle | 3.48 / 98.6 |
| 12220S | 22 TON | STEEL | 20 x 20 x 1.25in. 50.8 x 50.8 x 3.175cm. | 22 19 | 10 25.4 | 28 12.7 | 120 psi. 8 bar | Square | 1 Handle | 6.67 / 189 |
| 12220K | 22 TON | ARAMID | 20 x 20 x 1.25in. 50.8 x 50.8 x 3.175cm. | 22 19 | 10 25.4 | 22 9.9 | 120 psi. 8 bar | Square | 1 Handle | 6.67 / 189 |
| 13220S | 32 TON | STEEL | 21 x 25 x 1.25in. 53.34 x 63.5 x 3.175cm. | 32 29 | 12 30.4 | 35 15.8 | 120 psi. 8 bar | Rectangle | 1 Handle | 11.58 / 328 |
| 13220K | 32 TON | ARAMID | 21 x 25 x 1.25in. 53.34 x 63.5 x 3.175cm. | 32 29 | 12 30.4 | 28 12.7 | 120 psi. 8 bar | Rectangle | 1 Handle | 11.58 / 328 |
| 13720S | 37 TON | STEEL | 42 x 16 x 1.25in. 106.68 x 40.64 x 3.175cm. | 37 34 | 9 22.8 | 43 19.5 | 120 psi. 8 bar | Rectangle | 7 Tabs 2 Handles | 13.3 / 375.8 |
| 13720K | 37 TON | ARAMID | 42 x 16 x 1.25in. 106.68 x 40.64 x 3.175cm. | 37 34 | 9 22.8 | 33 14.9 | 120 psi. 8 bar | Rectangle | 7 Tabs 2 Handles | 13.3 / 375.8 |
| 15020S | 50 TON | STEEL | 29 x 29 x 1.25in. 73.66 x 73.66 x 3.175cm. | 50 45 | 15 38 | 63 28.5 | 120 psi. 8 bar | Square | 2 Handles | 19.78 / 560 |
| 15020K | 50 TON | ARAMID | 29 x 29 x 1.25in. 73.66 x 73.66 x 3.175cm. | 50 45 | 15 38 | 45 20.4 | 120 psi. 8 bar | Square | 2 Handles | 19.78 / 560 |
| 17020S | 70 TON | STEEL | 34 x 34 x 1.25in. 86.36 x 86.36 x 3.175cm. | 70 63 | 18 45.7 | 81 36.7 | 120 psi. 8 bar | Square | 2 Handles | 37.5 / 1062 |
| 17020K | 70 TON | ARAMID | 34 x 34 x 1.25in. 86.36 x 86.36 x 3.175cm. | 70 63 | 18 45.7 | 60 27.2 | 120 psi. 8 bar | Square | 2 Handles | 37.5 / 1062 |
| 18620S | 86 TON | STEEL | 42 x 42 x 1.25in. 106.68 x 106.68 x 3.175cm | 86 78 | 24 60.9 | 118 53.6 | 120 psi. 8 bar | Square | 4 Handles | 57 / 1616 |



**Max working pressure is
120 PSI or 8 BAR**

Note: Dimensions do not include
eyelets or handles.

Lifting capacity and height will vary
according to air pressure and bag
contact area.

5 Year Unconditional Warranty

**All Matjack High Pressure Air Lifting Bags come with a molded non-slip interlocking surface, 5 Year Unconditional Warranty,
and are Made in the USA and CE Certified**

WARNING: This product can expose you to chemicals including, Butadiene, Styrene, Benzene, Hexane, Carbon Black, Toluene, Vinyl, Acetone, Butanone which are known to the State of California to cause cancer and birth defects or other reproductive harm. For more information go to www.P65Warnings.ca.gov.

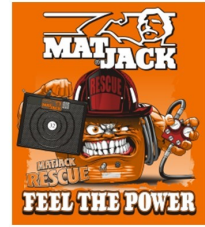


MATJACKS come in variety of sizes for all your lifting needs!



Matjack / Indianapolis Industrial Products, Inc
2320 Duke Street, Indianapolis, Indiana 46205
Phone: (317) 359-3078 Fax: (317) 359-3079
Toll Free US & Canada: (800) 827-3755
Email: sales@matjack.com

Website: www.matjack.com
ISO 9001:2015 Certified



HIGH PRESSURE F/R SERIES AIR LIFTING BAG 150 PSI / 10 BAR SPECIFICATIONS

| PART # | MODEL | MATERIAL | DIMENSIONS IN CM | CAPACITY US TONS METRIC TON | LIFTING HEIGHT IN CM | WEIGHT LBS KG | MAX WORKING PRESSURE | SHAPE | HANDLES OR EYELETS/ TABS | VOLUME-AIR CU. FT. / LTR |
|--------|---------|----------|---|-----------------------------------|-------------------------------|---------------------|----------------------------|-----------|-----------------------------------|-----------------------------|
| 10150K | 1.9 TON | ARAMID | 6 x 6 x .75in. 15.24 x 15.24 x 1.9cm. | 1.9 1.7 | 2.5 6.3 | 2 .9 | 150 psi. 10 bar | Square | 2 Tabs | .2 / 6.3 |
| 10450K | 4.1 TON | ARAMID | 6 x 12 x .75in. 15.24 x 30.48 x 1.9cm. | 4.1 3.0 | 3 7.6 | 3 1.3 | 150 psi. 10 bar | Rectangle | 4 Tabs | .44 / 12.66 |
| 10650S | 6.2 TON | STEEL | 10 x 10 x 1.25in. 25.4 x 25.4 x 3.175cm. | 6.2 5.6 | 4.5 11.4 | 6 2.7 | 150 psi. 10 bar | Square | 4 Tabs | .68 / 19.3 |
| 10650K | 6.2 TON | ARAMID | 10 x 10 x 1.25in. 25.4 x 25.4 x 3.175cm. | 6.2 5.6 | 4.5 11.4 | 4 1.8 | 150 psi. 10 bar | Square | 4 Tabs | .68 / 19.3 |
| 11450S | 14.TON | STEEL | 15 x 15 x 1.25in. 38.1 x 38.1 x 3.175cm. | 14.7 13.4 | 7.5 19 | 15 6.8 | 150 psi. 10 bar | Square | 4 Tabs | 2.7 / 76.4 |
| 11450K | 14 TON | ARAMID | 15 x 15 x 1.25in. 38.1 x 38.1 x 3.175cm. | 14.7 13.4 | 7.5 19 | 11 4.9 | 150 psi. 10 bar | Square | 4 Tabs | 2.7 / 76.4 |
| 12150S | 21 TON | STEEL | 15 x 21 x 1.25in. 38.1 x 53.34 x 3.175cm. | 21 19 | 7.5 19 | 19 9 | 150 psi. 10 bar | Rectangle | 2 Tabs 1 Handle | 3.48 / 98.6 |
| 12150K | 21 TON | ARAMID | 15 x 21 x 1.25in. 38.1 x 53.34 x 3.175cm. | 21 19 | 7.5 19 | 15 7 | 150 psi. 10 bar | Rectangle | 2 Tabs 1 Handle | 3.48 / 98.6 |
| 12750S | 27 TON | STEEL | 20 x 20 x 1.25in. 50.8 x 50.8 x 3.175cm. | 27 24.5 | 10 25.4 | 28 12.7 | 150 psi. 10 bar | Square | 1 Handle | 6.67 / 189 |
| 12750K | 27 TON | ARAMID | 20 x 20 x 1.25in. 50.8 x 50.8 x 3.175cm. | 27 24.5 | 10 25.4 | 22 9.9 | 150 psi. 10 bar | Square | 1 Handle | 6.67 / 189 |
| 13450S | 34 TON | STEEL | 21 x 25 x 1.25in. 53.34 x 63.5 x 3.175cm. | 34 30.9 | 12 30.4 | 35 15.8 | 150 psi. 10 bar | Rectangle | 1 Handle | 11.58 / 328 |
| 13450K | 34 TON | ARAMID | 21 x 25 x 1.25in. 53.34 x 63.5 x 3.175cm. | 34 30.9 | 12 30.4 | 28 12.7 | 150 psi. 10 bar | Rectangle | 1 Handle | 11.58 / 328 |
| 14650S | 46 TON | STEEL | 42 x 16 x 1.25in. 106.68 x 40.64 x 3.175cm. | 46 41.8 | 9 22.8 | 43 19.5 | 150 psi. 10 bar | Rectangle | 7 Tabs 2 Handles | 13.3 / 375.8 |
| 14650K | 46 TON | ARAMID | 42 x 16 x 1.25in. 106.68 x 40.64 x 3.175cm. | 46 41.8 | 9 22.8 | 33 14.9 | 150 psi. 10 bar | Rectangle | 7 Tabs 2 Handles | 13.3 / 375.8 |
| 15850S | 58 TON | STEEL | 29 x 29 x 1.25in. 73.66 x 73.66 x 3.175cm. | 58 52.7 | 15 38 | 63 28.5 | 150 psi. 10 bar | Square | 2 Handles | 19.78 / 560 |
| 15850K | 58 TON | ARAMID | 29 x 29 x 1.25in. 73.66 x 73.66 x 3.175cm. | 58 52.7 | 15 38 | 45 20.4 | 150 psi. 10 bar | Square | 2 Handles | 19.78 / 560 |
| 17650S | 76 TON | STEEL | 34 x 34 x 1.25in. 86.36 x 86.36 x 3.175cm. | 76 69 | 18 45.7 | 81 36.7 | 150 psi. 10 bar | Square | 2 Handles | 37.5 / 1062 |
| 17650K | 76 TON | ARAMID | 34 x 34 x 1.25in. 86.36 x 86.36 x 3.175cm. | 76 69 | 18 45.7 | 60 27.2 | 150 psi. 10 bar | Square | 2 Handles | 37.5 / 1062 |
| 11450S | 114 TON | STEEL | 42 x 42 x 1.25in. 106.68 x 106.68 x 3.175cm. | 114 103 | 24 60.9 | 118 53.6 | 150 psi. 10 bar | Square | 4 Handles | 57 / 1616 |



**Max working pressure is
150 PSI or 10 BAR**

Note: Dimensions do not include
eyelets or handles.

Lifting capacity and height will vary
according to air pressure and bag
contact area.

5 Year Unconditional Warranty

All Matjack High Pressure Air Lifting Bags come with a molded non-slip interlocking surface, 5 Year Unconditional Warranty, and are Made in the USA and CE Certified

WARNING: This product can expose you to chemicals including, Butadiene, Styrene, Benzene, Hexane, Carbon Black, Toluene, Vinyl, Acetone, Butanone which are known to the State of California to cause cancer and birth defects or other reproductive harm. For more information go to www.P65Warnings.ca.gov.



MATJACKS come in variety of sizes for all your lifting needs!



Matjack / Indianapolis Industrial Products, Inc
2320 Duke Street, Indianapolis, Indiana 46205

Phone: (317) 359-3078 Fax: (317) 359-3079

Toll Free US & Canada: (800) 827-3755

Email: sales@matjack.com

Website: www.matjack.com

ISO 9001:2015 Certified



HIGH PRESSURE F/R SERIES AIR LIFTING BAG 175 PSI / 12 BAR SPECIFICATIONS

| PART # | MODEL | MATERIAL | DIMENSIONS IN CM | CAPACITY US TONS METRIC TON | LIFTING HEIGHT IN CM | WEIGHT LBS KG | MAX WORKING PRESSURE | SHAPE | HANDLES OR EYELETS/ TABS | VOLUME-AIR CU. FT. / LTR |
|--------|---------|----------|---|-----------------------------------|-------------------------------|---------------------|----------------------------|-----------|-----------------------------------|-----------------------------|
| 10275K | 2.1 TON | ARAMID | 6 x 6 x .75in. 15.24 x 1 5.24 x 1.9cm. | 2.1 1.9 | 2.5 6.3 | 2 .9 | 175 psi. 12 bar | Square | 2 Tabs | .2 / 6.3 |
| 10475K | 4.8 TON | ARAMID | 6 x 12 x .75in. 15.24 x 30.48 x 1.9cm. | 4.8 4.3 | 3 7.6 | 3 1.3 | 175 psi. 12 bar | Rectangle | 4 Tabs | .44 / 12.66 |
| 10775S | 7 TON | STEEL | 10 x 10 x 1.25in. 25.4 x 25.4 x 3.175cm. | 7 6.3 | 4.5 11.4 | 6 2.7 | 175 psi. 12 bar | Square | 4 Tabs | .68 / 19.3 |
| 10775K | 7 TON | ARAMID | 10 x 10 x 1.25in.. 25.4 x 25.4 x 3.175cm | 7 6.3 | 4.5 11.4 | 4 1.8 | 175 psi. 12 bar | Square | 4 Tabs | .68 / 19.3 |
| 11775S | 17 TON | STEEL | 15 x 15 x 1.25in. 38.1 x 38.1 x 3.175cm. | 17 15.5 | 7.5 19 | 15 6.8 | 175 psi. 12 bar | Square | 4 Tabs | 2.7 / 76.4 |
| 11775K | 17 TON | ARAMID | 15 x 15 x 1.25in. 38.1 x 38.1 x 3.175cm. | 17 15.5 | 7.5 19 | 11 4.9 | 175 psi. 12 bar | Square | 4 Tabs | 2.7 / 76.4 |
| 12475S | 24 TON | STEEL | 15 x 21 x 1.25in. 38.1 x 53.34 x 3.175cm. | 24 21.8 | 7.5 19 | 19 9 | 175 psi. 12 bar | Rectangle | 2 Tabs 1 Handle | 3.48 / 98.6 |
| 12475K | 24 TON | ARAMID | 15 x 21 x 1.25in.. 38.1 x 53.34 x 3.175cm. | 24 21.8 | 7.5 19 | 15 7 | 175 psi. 12 bar | Rectangle | 2 Tabs 1 Handle | 3.48 / 98.6 |
| 13175S | 31 TON | STEEL | 20 x 20 x 1.25in.. 50.8 x 50.8 x 3.175cm. | 31 28 | 10 25.4 | 28 12.7 | 175 psi. 12 bar | Square | 1 Handle | 6.67 / 189 |
| 13175K | 31 TON | ARAMID | 20 x 20 x 1.25in. 50.8x 50.8 x 3.175cm. | 31 28 | 10 25.4 | 22 9.9 | 175 psi. 12 bar | Square | 1 Handle | 6.67 / 189 |
| 14175S | 41 TON | STEEL | 21 x 25 x 1.25in.. 53.34 x 63.5 x 3.175cm. | 41 37 | 12 30.4 | 35 15.8 | 175 psi. 12 bar | Rectangle | 1 Handle | 11.58 / 328 |
| 14175K | 41 TON | ARAMID | 21 x 25 x 1.25in. 53.34 x 63.5 x 3.175cm. | 41 37 | 12 30.4 | 28 12.7 | 175 psi. 12 bar | Rectangle | 1 Handle | 11.58 / 328 |
| 15375S | 53 TON | STEEL | 42 x16 x 1.25in. 106.68 x 40.64x3.175cm. | 53 48 | 9 22.8 | 43 19.5 | 175 psi. 12 bar | Rectangle | 7 Tabs 2 Handles | 13.3 / 375.8 |
| 15375K | 53 TON | ARAMID | 42 x 16 x 1.25in.. 106.68 x 40.64 x 3.175cm. | 53 48 | 9 22.8 | 33 14.9 | 175 psi. 12 bar | Rectangle | 7 Tabs 2 Handles | 13.3 / 375.8 |
| 16375S | 63 TON | STEEL | 29 x 29 x 1.25in.. 73.66 x 73.66 x 3.175cm. | 63 57 | 15 38 | 63 28.5 | 175 psi. 12 bar | Square | 2 Handles | 19.78 / 560 |
| 16375K | 63 TON | ARAMID | 29 x 29 x 1.25in. 73.66 x 73.66 x 3.175cm. | 50 57 | 15 38 | 45 20.4 | 175 psi. 12 bar | Square | 2 Handles | 19.78/ 560 |
| 18075S | 80 TON | STEEL | 34 x 34 x 1.25in. 86.36 x 86.36 x 3.175cm. | 80 73 | 18 45.7 | 81 36.7 | 175 psi. 12 bar | Square | 2 Handles | 37.5 / 1062 |
| 18075K | 80 TON | ARAMID | 34 x 34 x 1.25in. 86.36 x 86.36 x 3.175cm. | 80 73 | 18 45.7 | 60 27.2 | 175 psi. 12 bar | Square | 2 Handles | 37.5 / 1062 |
| 12675S | 126 TON | STEEL | 42 x 42 x 1.25in. 106.68 x 106.68 x 3.175cm. | 126 114 | 24 60.9 | 118 53.6 | 175 psi. 12 bar | Square | 4 Handles | 57 / 1616 |



**Max working pressure is
175 PSI or 12 BAR**

Note: Dimensions do not include
eyeclets or handles.

Lifting capacity and height will vary
according to air pressure and bag
contact area.

3 Year Unconditional Warranty

**All Matjack High Pressure Air Lifting Bags come with a molded non-slip interlocking surface, 3 Year Unconditional Warranty, and
are Made in the USA and CE Certified**

WARNING: This product can expose you to chemicals including, Butadiene, Styrene, Benzene, Hexane, Carbon Black, Toluene, Vinyl, Acetone, Butanone which
are known to the State of California to cause cancer and birth defects or other reproductive harm. For more information go to www.P65Warnings.ca.gov.



MATJACKS come in variety of sizes
for all your lifting needs!

Matjack High Pressure F/R Series Air Lifting Bags



6" X 6" X .75" Matjack Air Bags 120, 150, 175 p.s.i.

Matjack Dimensions: 6" x 6" x .75" / 15.24 x 15.24 x 1.9cm

Inflation Height: 2.5" / 6.3cm. Weight: 2 lbs. / 9 kg.

1.5 Ton 120 p.s.i. / 8 bar Matjack Air Bag (available in Aramid only)

Part # 10120K

1.5 Ton Matjack High Pressure Air Bag 120

Part # 10120BK

1.5 Ton Matjack High Pressure Air Bag Kit 120



1.9 Ton 150 p.s.i. / 10 bar Matjack Air Bag (available in Aramid only)

Part # 10150K

1.9 Ton Matjack High Pressure Air Bag 150

Part # 10150BK

1.9 Ton Matjack High Pressure Air Bag Kit 150



2.1 Ton 175 p.s.i. / 12 bar Matjack Air Bag (available in Aramid only)

Part # 10175K

2.1 Ton Matjack High Pressure Air Bag 175

Part # 10175BK

2.1 Ton Matjack High Pressure Air Bag Kit 175



6" X 12" X .75" Matjack Air Bags 120, 150, 175 p.s.i.

Matjack Dimensions: 6" x 12" x .75" / 15.24 x 30.48 x 1.9 cm

Inflation Height: 3" / 7.6 cm. Weight: 3 lbs. / 13 kg.

3.3 Ton 120 p.s.i. / 8 bar Matjack (available in Aramid only)

Part # 10320K

3.3 Ton Matjack High Pressure Air Bag 120

Part # 10320BK

3.3 Ton Matjack High Pressure Air Bag Kit 120



4.1 Ton 150 p.s.i. / 10 bar Matjack Air Bag (available in Aramid only)

Part # 10450K

4.1 Ton Matjack High Pressure Air Bag 150

Part # 10450BK

4.1 Ton Matjack High Pressure Air Bag Kit 150



4.8 Ton 175 p.s.i. / 12 bar Matjack Air Bag (available in Aramid only)

Part # 10475K

4.8 Ton Matjack High Pressure Air Bag 175

Part # 10475BK

4.8 Ton Matjack High Pressure Air Bag Kit 175

10" X 10" X 1.25" Matjack Air Bags 120, 150, 175 p.s.i.

Matjack Dimensions: 10" x 10" x 1.25" / 25.4 x 25.4 x 3.175 cm.

Inflation Height: 4.5" / 11.4 cm.

Steel Weight: 6 lbs. / 2.7 kg - Aramid Weight 4 lbs. / 1.8 kg.

6 Ton 120 p.s.i. / 8 bar Matjack (available in Steel Or Aramid)

Part # 10620S

6 Ton Steel Matjack High Pressure Air Bag 120

Part # 10620K

6 Ton Aramid Matjack High Pressure Air Bag 120

Part # 10620BS

6 Ton Steel Matjack Basic Kit 120

Part # 10620BK

6 Ton Aramid Matjack Basic Kit 120



6.2 Ton 150 p.s.i. / 10 bar Matjack (available in Steel Or Aramid)

Part # 10650S

6.2 Ton Steel Matjack High Pressure Air Bag 150

Part # 10650K

6.2 Ton Aramid Matjack High Pressure Air Bag 150

Part # 10650BS

6.2 Ton Steel Matjack Basic Kit 150

Part # 10650BK

6.2 Ton Aramid Matjack Basic Kit 150



7 Ton 175 p.s.i. / 12 bar Matjack (available in Steel Or Aramid)

Part # 10675S

7 Ton Steel Matjack High Pressure Air Bag 175

Part # 10675K

7 Ton Aramid Matjack High Pressure Air Bag 175

Part # 10675BS

7 Ton Steel Matjack Basic Kit 175

Part # 10675BK

7 Ton Aramid Matjack Basic Kit 175





MATJACKS come in variety of sizes
for all your lifting needs!

Matjack High Pressure F/R Series Air Lifting Bags



15" X 15" X 1.25" Matjack Air Bags 120, 150, 175 p.s.i.

Matjack Dimensions: 15" x 15" x 1.25" / 38.1 x 38.1 x 3.175 cm.

Inflation Height: 7.5" / 19 cm.

Steel Weight: 15 lbs. / 6.8kg. Aramid Weight: 4 lbs. / 1.8 kg.

13 Ton 120 p.s.i. / 8 bar Matjack Air Bag (available in Steel Or Aramid)

Part # 11320S

13 Ton Steel Matjack High Pressure Air Bag 120

Part # 11320K

13 Ton Aramid Matjack High Pressure Air Bag 120

Part # 11320BS

13 Ton Steel Matjack High Pressure Air Bag Kit 120

Part # 11320BK

13 Ton Aramid Matjack High Pressure Air Bag Kit 120

14.7 Ton 150 p.s.i. / 10 bar Matjack Air Bag (available in Steel Or Aramid)

Part # 11450S

14 Ton Steel Matjack High Pressure Air Bag 150

Part # 11450K

14 Ton Aramid Matjack High Pressure Air Bag 150

Part # 11450BS

14 Ton Steel Matjack High Pressure Air Bag Kit 150

Part # 11450BK

14 Ton Aramid Matjack High Pressure Air Bag Kit 150

17 Ton 175 p.s.i. / 12 bar Matjack Air Bag (available in Steel Or Aramid)

Part # 117750S

17 Ton Steel Matjack High Pressure Air Bag 175

Part # 11775K

17 Ton Aramid Matjack High Pressure Air Bag 175

Part # 11775BS

17 Ton Steel Matjack High Pressure Air Bag Kit 175

Part # 11775BK

17 Ton Aramid Matjack High Pressure Air Bag Kit 175



15" X 21" X 1.25" Matjack Air Bag 120, 150, 175 p.s.i.

Matjack Dimensions: 15" x 21" x 1.25" / 38.1 x 53.34 x 3.175 cm.

Inflation height: 7.5" / 19 cm.

Steel Weight: 19 lbs. / 9kg. - Aramid Weight: 15 lbs. / 7 kg.

15 Ton 120 p.s.i. / 8 bar Matjack (available in Steel Or Aramid)

Part # 11520S

15 Ton Steel Matjack High Pressure Air Bag 120

Part # 11520K

15 Ton Aramid Matjack High Pressure Air Bag 120

Part # 11520BS

15 Ton Steel Matjack Basic Kit 120

Part # 11520BK

15 Ton Aramid Matjack Basic Kit 120

21 Ton 150 p.s.i. / 10 bar Matjack (available in Steel Or Aramid)

Part # 12150S

21 Ton Steel Matjack High Pressure Air Bag 150

Part # 12150K

21 Ton Aramid Matjack High Pressure Air Bag 150

Part # 12150BS

21 Ton Steel Matjack Basic Kit 150

Part # 12150BK

21 Ton Aramid Matjack Basic Kit 150

24 Ton 175 p.s.i. / 12 bar Matjack (available in Steel Or Aramid)

Part # 12475S

24 Ton Steel Matjack High Pressure Air Bag 175

Part # 12475K

24 Ton Aramid Matjack High Pressure Air Bag 175

Part # 12475BS

24 Ton Steel Matjack Basic Kit 175

Part # 12475BK

24 Ton Aramid Matjack Basic Kit 175





MATJACKS come in variety of sizes
for all your lifting needs!

Matjack High Pressure F/R Series Air Lifting Bags



20" X 20" X 1.25" Matjack Air Bags 120, 150, 175 p.s.i.

Matjack Dimensions: 20" x 20" x 1.25" / 50.8 x 50.8 x 3.175 cm.

Inflation Height: 10" x 25.4 cm.

Steel Weight: 28 lbs. / 12.7kg. – Aramid Weight 22 lbs. / 9.9kg. .

22 Ton 120 p.s.i. / 8 bar Matjack Air Bag (available in Steel Or Aramid)

Part # 12220S

22 Ton Steel Matjack High Pressure Air Bag 120

Part # 12220K

22 Ton Aramid Matjack High Pressure Air Bag 120

Part # 12220BS

22 Ton Steel Matjack High Pressure Air Bag Kit 120

Part # 12220BK

22 Ton Aramid Matjack High Pressure Air Bag Kit 120



27 Ton 150 p.s.i. / 10 bar Matjack Air Bag (available in Steel Or Aramid)

Part # 12750S

27 Ton Steel Matjack High Pressure Air Bag 150

Part # 12750K

27 Ton Aramid Matjack High Pressure Air Bag 150

Part # 12750BS

27 Ton Steel Matjack High Pressure Air Bag Kit 150

Part # 12750BK

27 Ton Aramid Matjack High Pressure Air Bag Kit 150



31 Ton 175 p.s.i. / 12 bar Matjack Air Bag (available in Steel Or Aramid)

Part # 13175S

31 Ton Steel Matjack High Pressure Air Bag 175

Part # 13175K

31 Ton Aramid Matjack High Pressure Air Bag 175

Part # 13175BS

31 Ton Steel Matjack High Pressure Air Bag Kit 175

Part # 13175BK

31 Ton Aramid Matjack High Pressure Air Bag Kit 175

21" X 25" X 1.25" Matjack Air Bag 120, 150, 175 p.s.i.

Matjack Dimensions: 21" x 25" x 1.25" / 53.34 x 63.5 x 3.175 cm.

Inflation Height: 12" / 30.4 cm.

Steel Weight 35 lbs. / 15.8 kg. – Aramid Weight 28 lbs. / 12.7 kg.

32 Ton 120 p.s.i. / 8 bar Matjack (available in Steel Or Aramid)

Part # 13220S

32 Ton Steel Matjack High Pressure Air Bag 120

Part # 13220K

32 Ton Aramid Matjack High Pressure Air Bag 120

Part # 13220BS

32 Ton Steel Matjack Basic Kit 120

Part # 13220BK

32 Ton Aramid Matjack Basic Kit 120



34 Ton 150 p.s.i. / 10 bar Matjack (available in Steel Or Aramid)

Part # 13450S

34 Ton Steel Matjack High Pressure Air Bag 150

Part # 13450K

34 Ton Aramid Matjack High Pressure Air Bag 150

Part # 13450BS

34 Ton Steel Matjack Basic Kit 150

Part # 13450BK

34 Ton Aramid Matjack Basic Kit 150



41 Ton 175 p.s.i. / 12 bar Matjack (available in Steel Or Aramid)

Part # 14175S

41 Ton Steel Matjack High Pressure Air Bag 175

Part # 14175K

41 Ton Aramid Matjack High Pressure Air Bag 175

Part # 14175BS

41 Ton Steel Matjack Basic Kit 175

Part # 14175BK

41 Ton Aramid Matjack Basic Kit 175





MATJACKS come in variety of sizes
for all your lifting needs!

Matjack High Pressure F/R Series Air Lifting Bags

42" X 16" X 1.25" Matjack Air Bags 120, 150, 175 p.s.i.

Matjack Dimensions: 42" x 16" x 1.25" / 106.68 x 40.64 x 3.175 cm.

Inflation Height: 9" / 22.8 cm.

Steel Weight: 43 lbs. / 19.5 kg. – Aramid Weight 33 lbs. / 1.49 kg.



37 Ton 120 p.s.i. / 8 bar Matjack Air Bag (available in Steel Or Aramid)

Part # 13720S

37 Ton Steel Matjack High Pressure Air Bag 120

Part # 13720K

37 Ton Aramid Matjack High Pressure Air Bag 120

Part # 13720BS

37 Ton Steel Matjack High Pressure Air Bag Kit 120

Part # 13720BK

37 Ton Aramid Matjack High Pressure Air Bag Kit 120



46 Ton 150 p.s.i. / 10 bar Matjack Air Bag (available in Steel Or Aramid)

Part # 14650S

46 Ton Steel Matjack High Pressure Air Bag 150

Part # 14650K

46 Ton Aramid Matjack High Pressure Air Bag 150

Part # 14650BS

46 Ton Steel Matjack High Pressure Air Bag Kit 150

Part # 14650BK

46 Ton Aramid Matjack High Pressure Air Bag Kit 150



53 Ton 175 p.s.i. / 12 bar Matjack Air Bag (available in Steel Or Aramid)

Part # 15375S

53 Ton Steel Matjack High Pressure Air Bag 175

Part # 15375K

53 Ton Aramid Matjack High Pressure Air Bag 175

Part # 15375BS

53 Ton Steel Matjack High Pressure Air Bag Kit 175

Part # 15375BK

53 Ton Aramid Matjack High Pressure Air Bag Kit 175

29" X 29" X 1.25" Matjack Air Bag 120, 150, 175 p.s.i.

Matjack Dimensions: 29" x 29" x 1.25" / 73.66 x 73.66 x 3.175 cm.

Inflation Height: 15" / 38 cm.

Steel Weight: 63 lbs. / 28.5 kg. – Aramid Weight 45 lbs. / 20.4 kg.



50 Ton 120 p.s.i. / 8 bar Matjack (available in Steel Or Aramid)

Part # 15020S

50 Ton Steel Matjack High Pressure Air Bag 120

Part # 15020K

50 Ton Aramid Matjack High Pressure Air Bag 120

Part # 15020BS

50 Ton Steel Matjack Basic Kit 120

Part # 15020BK

50 Ton Aramid Matjack Basic Kit 120



58 Ton 150 p.s.i. / 10 bar Matjack (available in Steel Or Aramid)

Part # 15850S

58 Ton Steel Matjack High Pressure Air Bag 150

Part # 15850K

58 Ton Aramid Matjack High Pressure Air Bag 150

Part # 15850BS

58 Ton Steel Matjack Basic Kit 150

Part # 15850BK

58 Ton Aramid Matjack Basic Kit 150



63 Ton 175 p.s.i. / 12 bar Matjack (available in Steel Or Aramid)

Part # 16375S

63 Ton Steel Matjack High Pressure Air Bag 175

Part # 16375K

63 Ton Aramid Matjack High Pressure Air Bag 175

Part # 16375BS

63 Ton Steel Matjack Basic Kit 175

Part # 16375BK

63 Ton Aramid Matjack Basic Kit 175



MATJACKS come in variety of sizes
for all your lifting needs!

Matjack High Pressure F/R Series Air Lifting Bags

34" X 34" X 1.25" Matjack Air Bags 120, 150, 175 p.s.i.

Matjack Dimensions: 34" x 34" x 1.25" / 86.36 x 86.36 x 3.175 cm.

Inflation Height: 18" / 45.7 cm.

Steel Weight 81 lbs. / 36.7 kg. – Aramid Weight 60 lbs. / 27.2 kg.



70 Ton 120 p.s.i. / 8 bar Matjack Air Bag (available in Steel Or Aramid)

Part # 17020S

70 Ton Steel Matjack High Pressure Air Bag 120

Part # 17020K

70 Ton Aramid Matjack High Pressure Air Bag 120

Part # 17020BS

70 Ton Steel Matjack High Pressure Air Bag Kit 120

Part # 17020BK

70 Ton Aramid Matjack High Pressure Air Bag Kit 120

76 Ton 150 p.s.i. / 10 bar Matjack Air Bag (available in Steel Or Aramid)

Part # 17650S

76 Ton Steel Matjack High Pressure Air Bag 150

Part # 17650K

76 Ton Aramid Matjack High Pressure Air Bag 150

Part # 17650BS

76 Ton Steel Matjack High Pressure Air Bag Kit 150

Part # 17650BK

76 Ton Aramid Matjack High Pressure Air Bag Kit 150

80 Ton 175 p.s.i. / 12 bar Matjack Air Bag (available in Steel Or Aramid)

Part # 18075S

80 Ton Steel Matjack High Pressure Air Bag 175

Part # 18075K

80 Ton Aramid Matjack High Pressure Air Bag 175

Part # 18075BS

80 Ton Steel Matjack High Pressure Air Bag Kit 175

Part # 18075BK

80 Ton Aramid Matjack High Pressure Air Bag Kit 175

42" X 42" X 1.25" Matjack Air Bag 120, 150, 175 p.s.i.

Matjack Dimensions: 42" x 42" x 1.25" / 106.68 x 106.68 x 3.175 cm.

Inflation Height: 24" / 60.9 cm.

Steel Weight: 118 lbs. / 53.6 kg.



86 Ton 120 p.s.i. / 8 bar Matjack (available in Steel Or Aramid)

Part # 18620S

86 Ton Steel Matjack High Pressure Air Bag 120

Part # 18620K

86 Ton Aramid Matjack High Pressure Air Bag 120

Part # 18620BS

86 Ton Steel Matjack Basic Kit 120

Part # 18620BK

86 Ton Aramid Matjack Basic Kit 120

114 Ton 150 p.s.i. / 10 bar Matjack (available in Steel Or Aramid)

Part # 111450S

114 Ton Steel Matjack High Pressure Air Bag 150

Part # 111450K

114 Ton Aramid Matjack High Pressure Air Bag 150

Part # 111450BS

114 Ton Steel Matjack Basic Kit 150

Part # 111450BK

114 Ton Aramid Matjack Basic Kit 150

126 Ton 175 p.s.i. / 12 bar Matjack (available in Steel Or Aramid)

Part # 112675S

126 Ton Steel Matjack High Pressure Air Bag 175

Part # 112675K

126 Ton Aramid Matjack High Pressure Air Bag 175

Part # 112675BS

126 Ton Steel Matjack Basic Kit 175

Part # 112675BK

126 Ton Aramid Matjack Basic Kit 175



**MATJACKS come in variety of sizes
for all your lifting needs!**

Matjack High Pressure F/R Series Flat Lift Air Lifting Bags



Matjack Flat Lift airbags are the only U. S. built airbags that give you the advantage of high pressure airbags lifting substantial weight while giving you the lifting surface you expect from Low or Medium pressure cushions. Matjack Flat Lift Air Lifting Bags answer the call for a high pressure airbag to lift with a consistent flat lifting surface throughout the lift. These give the airbags a more stable surface at the top of the stroke without rounding and potentially losing or tipping the load. Matjack builds the best Flat Lift airbags in the industry backed up by the best warranty. Call today to find a dealer close to you for pricing and demonstrations.

20" X 20" X 1.25" Matjack Air Bags 120 p.s.i.

Matjack Dimensions: 20" x 20" x 1.25" / 50.8 x 50.8 x 3.175 cm.

Inflation Height: 8" / 20 cm.

Steel Weight: 28 lbs. / 12.7kg. – Aramid Weight 22 lbs. / 9.9kg. .

22 / 7 Ton 120 p.s.i. / 8 bar Matjack Air Bag (available in Steel Or Aramid)

| | |
|------------------|---|
| Part # 12220SFL | 22 Ton Steel Matjack High Pressure Air Bag 120 |
| Part # 12220KFL | 22 Ton Aramid Matjack High Pressure Air Bag 120 |
| Part # 12220BSFL | 22 Ton Steel Matjack High Pressure Air Bag Kit 120 |
| Part # 12220BKFL | 22 Ton Aramid Matjack High Pressure Air Bag Kit 120 |



21" X 25" X 1.25" Matjack Air Bag 120 p.s.i.

Matjack Dimensions: 21" x 25" x 1.25" / 53.34 x 63.5 x 3.175 cm.

Inflation Height: 8" / 20 cm.

Steel Weight 35 lbs. / 15.8 kg. – Aramid Weight 28 lbs. / 12.7 kg.

32/ 12 Ton 120 p.s.i. / 8 bar Matjack (available in Steel Or Aramid)

| | |
|------------------|---|
| Part # 13220SFL | 32 Ton Steel Matjack High Pressure Air Bag 120 |
| Part # 13220KFL | 32 Ton Aramid Matjack High Pressure Air Bag 120 |
| Part # 13220BSFL | 32 Ton Steel Matjack Basic Kit 120 |
| Part # 13220BKFL | 32 Ton Aramid Matjack Basic Kit 120 |



29" X 29" X 1.25" Matjack Air Bag 120 p.s.i.

Matjack Dimensions: 29" x 29" x 1.25" / 73.66 x 73.66 x 3.175 cm.

Inflation Height: 8" / 20 cm.

Steel Weight: 63 lbs. / 28.5 kg. – Aramid Weight 45 lbs. / 20.4 kg.

50/ 19 Ton 120 p.s.i. / 8 bar Matjack (available in Steel Or Aramid)

| | |
|------------------|---|
| Part # 15020SFL | 50 Ton Steel Matjack High Pressure Air Bag 120 |
| Part # 15020KFL | 50 Ton Aramid Matjack High Pressure Air Bag 120 |
| Part # 15020BSFL | 50 Ton Steel Matjack Basic Kit 120 |
| Part # 15020BKFL | 50 Ton Aramid Matjack Basic Kit 120 |





**MATJACKS come in variety of sizes
for all your lifting needs!**

Matjack High Pressure F/R Series Controls and Accessories



High Pressure Single Unit control with Lock Couplings

Dimensions: 3" x 7" x 3"

Weight: 2lbs.

Push button deadman control w/relief used to control pressurizing and deflation of high pressure Matjack air bags.

Part # 20120 or Part # 20150 or Part #20175



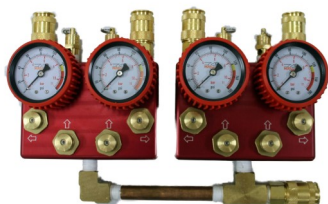
High Pressure 2 Unit Control with Lock Couplings

Dimensions: 6" x 7" x 3"

Weight: 5 lbs.

Dual push button deadman control w/relief used to control pressurizing and deflation of Matjack high pressure bags.

Part # 20220 or Part # 20150 or Part # 20175



High Pressure 4 Unit Control Lock Couplings

Dimensions: 15" x 10" x 3"

Weight: 12 lb.

Four unit push button deadman control w/relief used to control pressurizing and deflation of Matjack high pressure bags.

Part # 20420 or Part # 20150 or Part # 20175



High Pressure Dual Console Control

Dimensions: 12.5" x 10.125" x 6"

Weight: 7 lb.

Dual deadman toggle control built into a waterproof case, 120 psi / 8 bar capable

Part # 202DCC20 or Part 202DCC50 or Part # 202DCC75



This Master Control Package #4 consists of:

| Item Part # | Qty. | Description |
|-------------|------|--|
| 20220 | 1 | Dual Deadman Control |
| 74520 | 1 | 0-6000 Pressure Regulator |
| 51020 | 1 | 10' Regulator Hose |
| 51520BLK | 1 | 20' H. P. air hose Black |
| 51520BL | 1 | 20' H. P. air hose Blue |
| 51520Y | 1 | 20' H. P. air hose Yellow |
| 51520R | 1 | 20' H. P. air hose Red |
| 51520G | 1 | 20' H. P. air hose Green |
| 61220 | 4 | In line relief valves |
| 61320 | 1 | Glad hand adapter |
| 61420 | 2 | Matjack nipple with 1/4" NPT male |
| 61520 | 2 | Matjack nipple with 1/4" NPT female |
| 61620 | 1 | Matjack nipple with tire chuck adapter |
| 61720 | 1 | Shut off adapter with industrial nipples |
| 61820 | 2 | Y adapter female to male |
| 61920 | 1 | Y adapter female to female |
| 62020 | 1 | Shut off adapter nipple with industrial |
| 62120 | 1 | twist lock coupling |
| 605 | 1 | Orange Nanuk carrying case |

Part # MJMCP 4P (Other Pressure control packages available)



MATJACKS come in variety of sizes
for all your lifting needs!

Matjack High Pressure F/R Series Accessories



This Master Control Package #2 consists of:

| Item# | Qty. | Description |
|--------|------|---------------------------|
| 20220 | 1 | Dual deadman control |
| 72220 | 1 | 0-4000 pressure regulator |
| 51020 | 1 | 10' regulator hose |
| 51520R | 1 | 20' H. P. air hose Red |
| 51520Y | 1 | 20' H. P. air hose Yellow |

Part # MJMCP 2 (Other Pressure control packages available)

This Master Control Package #3 consists of:

| Item# | Qty. | Description |
|--------|------|---------------------------|
| 20220 | 1 | Dual deadman control |
| 74520 | 1 | 0-6000 pressure regulator |
| 51020 | 1 | 10' regulator hose |
| 51520R | 1 | 20' H. P. air hose Red |
| 51520Y | 1 | 20' H. P. air hose Yellow |

Part # MJMCP 3 (Other Pressure control packages available)

3/8" High Pressure Supply Hoses with Lock Couplers

Colors Available: Red, Black, Yellow, Gray, Blue, Green

Standard size 20' long

Custom sizes available



| | |
|--------------|---|
| Part # 51520 | 20' High pressure hose w/Lock Couplers |
| Part # 53020 | 30' High pressure hose w/ Lock Couplers |
| Part # 53220 | 32' High pressure hose w/ Lock Couplers |
| Part # 53520 | 35' High pressure hose w/ Lock Couplers |
| Part # 55020 | 50' High Pressure hose w/ Lock Couplers |

3/8" High Pressure Safety relief Hose with Lock coupler

Colors Available: Red, Black, Yellow, Gray, Blue, Green

Standard size is 20' long

Custom sizes available



| | |
|----------------|---|
| Part # 51520SR | 20' High pressure safety relief hose with Lock Couplers |
| Part # 53020SR | 30' High pressure safety relief hose with Lock Couplers |
| Part # 53220SR | 32' High pressure safety relief hose with Lock Couplers |
| Part # 53520SR | 35' High pressure safety relief hose with Lock Couplers |
| Part # 55020SR | 50' High pressure safety relief hose with Lock Couplers |

Y-Hose and Fittings

Dimensions: 6" x 4" / 1.8m x 1.2 m

Weight: 3lbs.

Part # 50520 Y-hose w Lock Couplers



2inch High Pressure Gauge

Dimensions: 2" x 2" x 2" / 5 x 5 x 5 cm. Weight 1 lb. Part# 602H

Weight 1 lbs.

Part # 602H20 (0-160 PSI / 8 BAR)

Part# 602H50 (0-200 PSI / 14 BAR)



Inline Relief Valve

Dimensions: 6" x 2" x 1.25" / 15.2 x 5 x 2.54cm.

In-line relief valve for use with high pressure air bags to avoid over pressurization. When closed an airline from the control is removed from the airbag.

Part # 61220

Part # 61250





MATJACKS come in variety of sizes for all your lifting needs!

Matjack High Pressure F/R Series Canvas and Carry Cases and Accessories



Canvas Accessory Bag

Dimensions: 18" x 18" / 45.72 x 45.72 cm.

Weight: 3 lb.

Canvas accessory bag included in 37T, 50T, 70T and 86T basic kits.

Part # 310



22T and 32T Canvas Storage Bag

Dimensions: 27" x 24" / 68.58 x 60.96 cm.

Weight: 3 lb.

Canvas storage bag for 22 and 32 Ton Matjack air bag

Part # 320



High pressure control case—Red

Case for 201, 201SC, 201JS, 202, 202SC,

Exterior dimensions: 16" length x 13" wide x 6.8" deep / 40364cm x 33.02 cm. x 17.27 cm.

Part # 6904S, 6904D



Nanuk control / regulator case—Yellow

Exterior dimensions: 16" length x 13" wide x 6.8" deep / 40364cm x 33.02 cm. x 17.27 cm.

Part # 603



Master Nanuk case—Orange

Exterior dimensions: 20.6" length x 16.8" width x 8" deep / 52.32 cm. x 42.67 cm. x 20.32 cm.

Part # 605



Military Nanuk case—black or Olive Drab

Exterior Dimensions: 24.25" length x 19.4" width x 8.6" deep / 61.59 cm. x 49.27 cm. x 21.84cm.

Part # 606B / 606OD Specify color



MATJACKS come in variety of sizes
for all your lifting needs!

Matjack High Pressure F/R Series Regulators and Accessories



Regulator For Air Bottle (4500)

Dimensions: 6" x 7" x 4"

Weight: 3 lbs.

4500 two stage diaphragm regulator for SCBA air bottles up to 5000 psi

Part # 74520 Regulator

Part # 74520DIN Regulator for Air Bottle (4500) w DIN Fitting



Regulator for Air Bottle (2216)

Dimensions: 8" x 7" x 4"

Weight: 4 lbs.

2216 Two-stage, regulator for SCBA air bottles up to 3000 psi.

Part # 72220 Regulator



10 Foot Regulator Hose with Lock Coupler

Dimensions: 3/8" x 10' / 3 meter

Weight 3 lbs.

10 Foot High Pressure Supply Line-10' Regulator Hose to be used with 4500 or 2216 regulator.

Part # 51020

10' Foot Regulator Hose w/ Lock Couplers-Green



Manifold for 4500 (Dual Bottle)

Dimensions: 12" x 4" x 2"

Weight 2 lbs.



Manifold for 2216 Regulator (brass)

Dimensions: 10" x 3" x 3"

Weight: 4 lbs.

2216 Dual bottle manifold for tying who 2216 bottles together for use with a common regulator

Part # 722 (2216 Reg.)



80 cu. ft. Industrial Air Cylinder w/ CGA346 Fitting

3000 psi / 200 bar

Dimension: 7" x 31.25"

Part # CHP80CF



80 cu. ft. Blue Dive Air Cylinder

3000 psi / 200 bar / CGA/DIN

Dimension: 7" x 29"

Part # DC80CF



Other Great MatJack Products

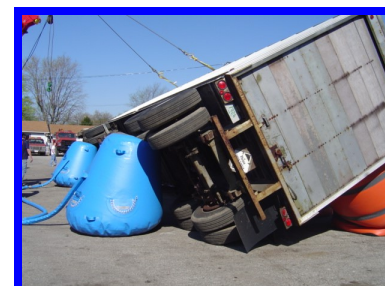
When failure isn't an option!



**Besides our MATJACK High Pressure Air Bags
We also carry a variety of other great products:**



**Jumbo Recovery Systems
Low Pressure Air Cushions
Medium Pressure Air Cushions
Landing Bags
Underwater Lift Bag
Remote Area Lighting, etc...**



**MATJACK / INDIANAPOLIS INDUSTRIAL PRODUCTS, INC.
2320 DUKE STREET**

INDIANAPOLIS, INDIANA 46205

Toll Free US and Canada (800) 827-3755 PHONE: (317) 359-3078 FAX: (317) 359-3079

EMAIL: sales@matjack.com

www.matjack.com